

**Submitted by:** Smart Services Director – Ruth Wong

**Date:** 15 October 2024

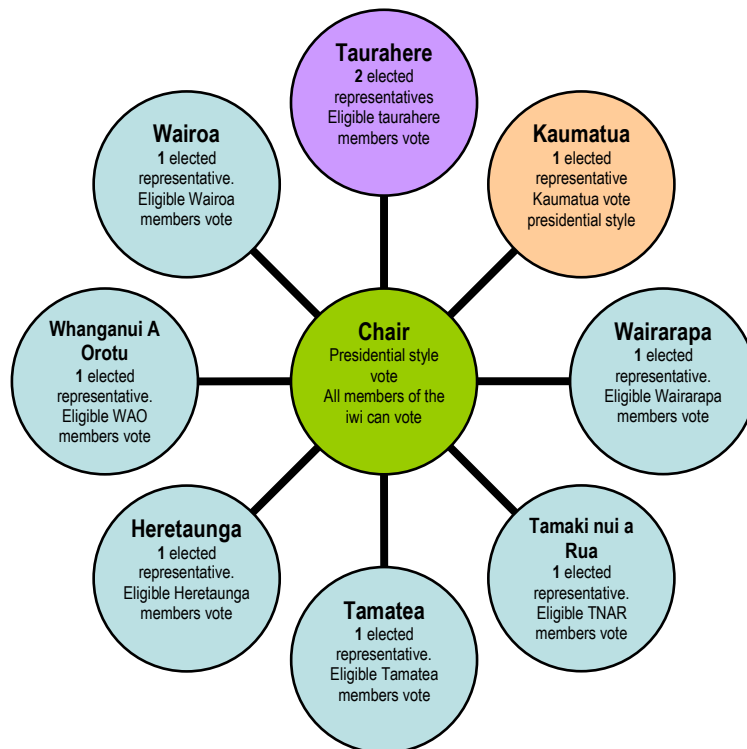
**Subject:** Ngāti Kahungunu Elections 2025

### **Purpose**

The Ngāti Kahungunu Iwi Incorporated (NKII) triennial Board Election is due to take place on Thursday 24 April 2025. At the Ngāti Kahungunu Iwi Incorporated Board Meeting held on Friday 27 September 2024, the Board was informed that this election would take place. This information paper gives a full outline of the election process and connects to the current political environment.

### **Background**

The Ngāti Kahungunu Iwi Incorporated Board Elections take place every three years. Nine (9) elections take place simultaneously for ten (10) positions on the Board as follows; The election of six (6) Taiwhenua/Rohe representatives, two (2) Taurahere representatives (from the Northern and Southern Districts), one (1) Kaumatua representative and (1) Chairman position.



### **Current Board 30 April 2022 -**

All members currently on the NKII Board were participants of the 2022 NKII Board election process.



*NKII Board Pōhiri 2022, Waipatu Marae*



*NKII Board Photo 27 September 2024*

From left to right – Thompson Hokianga (Heretaunga), Haami Hilton (Kaumātua), Brian Ruawai-Hamilton (Taurahere Southern), Bayden Barber (Chair), Eru Beattie (Taurahere Northern), Nigel How (Wairoa), Hori Reti (Te Whanganui-ā-Orotū), Melissa Ihaka (Wairarapa), Hayden Hape (Tamaki nui-ā-Rua), Jenny Smith (Tamatea). The late JB Smith was replaced with Jenny Smith following his passing.

### ***Alternate Board Members***

Each Board Member except the Chairperson shall have an Alternate Board Member who will be subject to the same procedure for appointment and election as the Board Member. The Alternate Board Member is the person who, in the Board Elections, receives the number of votes which is second only to the elected Board Member. To ensure there is an alternate, each Taiwhenua and Taurahere Board will notify a minimum of two candidates for the Board positions to the Returning Officer by the due date as stipulated in the election timeline. When this does not occur and only one nomination is received, there is no alternate.

### **Current Alternate Members**

For the 2022 Election only 3 positions received more than one nomination creating an opportunity for an alternate for that position. Kaumātua Alternate - Jerry Hapuku, Kahungunu ki Wairarapa Alternate - Jenishavorne Waipuka, Kahungunu ki Wairoa Alternate - Naomi Wilson.

### **Deputy Chairperson**

When the Chairperson is not present, the remaining Board Members shall elect a Chairperson for that particular meeting. In 2022 the late JB Smith was appointed Deputy Chairperson. In 2023 following JB's passing, the NKII Board appointed Thompson Hokianga as Deputy Chairperson.

### **Nominations**

## **MARAE, TAIWHENUA/ROHE & TAURAHERE NOMINATIONS**

**Marae/Taiwhenua** elections are held and run in accordance to their own constitutions. It is important that Marae/Taiwhenua elections are completed by the 1<sup>st</sup> February 2025 in order for newly elected board members to participate in the iwi elections if they so desire.

- **Candidates for the Iwi Chair** will come from the pool of Taiwhenua Board members who meet the criteria requirement at the time nominations open for the iwi election which is **3 February 2025**. The **incumbent Chair** becomes an eligible candidate to the position of Chairperson **without going through a marae/Taiwhenua election process** as stated in 9.2.1 in the Constitution.
- Candidates for the **Taiwhenua/Rohe/Taurahere** representative positions on the Board will come from the current pool of Taiwhenua/Rohe/Taurahere Board members at the time nominations open for the iwi election which is 3 February 2025.
- The Taiwhenua/Rohe Boards are made up of registered Marae representatives who have been appointed or elected by their respective marae to represent their marae on the Taiwhenua/Rohe Boards.
- The Taurahere Boards are made up of registered Kahungunu representatives who reside outside the Kahungunu rohe. The Taurahere Boards must be functioning to participate in the NKII Board Election.

## **KAUMĀTUA NOMINATIONS**

Kaumātua nominees come from an open pool. Candidates must be able to tick yes to **all** of the questions below to be eligible.

- Be a registered tangata whenua member of Kahungunu descent?
- Be 60 years or older?
- Be interested in the future of Ngāti Kahungunu Iwi?
- Be registered to participate in the 2025 election?
- Be proficient in Kahungunu tikanga, kawa and reo?
- Reside in the Kahungunu rohe?

## ***Election Timeline***

This is the Election Timeline. Information will be disseminated out at each phase to ensure the process is transparent, easy to understand and follow.



**Thursday 24 APRIL 2025**

Friday 27 Sept 2024	Ruth announces to NKII Board
Tuesday 1 October 2024	Contract signed with Election Services
Friday 4 October 2024	Communication Plan implemented
By Sat 1 February 2025	Taiwhenua, Taurahere and Kaumātu elections completed (separate process) (Rule 9.3)
Monday 3 February 2025	Nominations open
Fri 28 February 2025	Nominations close (12noon) (Sch 5 clause 3)
Mon 3 March 2025	Receive members data
Tues 4 March 2025	Public Notice – Candidate names
Mon 24 March 2025	Delivery of voting mailers (Sch 5 Clause 6) Progressive roll scrutiny Early processing Special voting period
Thursday 17 April 2025	Registrations close (4pm)
Thursday 24 April 2025	Election day Voting closes (12noon) (Sch 5 Clause 1) Special General Meeting (4.30pm)
Thursday 1 May 2025	Declaration of results
Sunday 1 June 2025	Voting papers destroyed (Sch 5 Clause 8(c))

### ***Independent Election Officer***

The Independent Returning Officer is Dale Ofoske of Election Services – [dale@electionservices.co.nz](mailto:dale@electionservices.co.nz) or phone toll free 0800 922 822



### ***Election Communication Plan and Platforms***

The Timeline outlines the communication timeframe. I will be using the following to get this information out.

- NKII Board Communication
- Taiwhenua And Taurahere Board Communication
- Panui Ki Te Iwi – Communication
- Facebook Communication
- Tik Tok And Instagram Communication
- Printed Information Pamphlets
- Word Of Mouth At All Hui
- Email Banners For All Staff
- All information will be secured on the iwi website and all communications will point to that information page.

### **Registration Drive**

It is important that our register is as updated to get as much participation in this election as possible. We will be communicating through our networks to encourage these updates.

### **NKII Register Statistics as of 15 October 2024**

	<b>Total (All ages)</b>	<b>Total Incorrect Address</b>
Total on our database - all ages	<b>40464</b> (Kahungunu: 37498)	<b>7612</b> (Kahungunu: 7007)
Total (18 & over) as of 24 Apr 2025	<b>31340</b> (Kahungunu: 29119)	<b>6440</b> (Kahungunu: 5957)
Total (18-40yrs only) as of 24 Apr 2025	<b>16483</b> (Kahungunu: 15297)	<b>2968</b> (Kahungunu: 2738)
Kaumātua (60 & Over) as of 24 Apr 2025	<b>6570</b> (Kahungunu: 6100)	<b>1603</b> (Kahungunu: 1490)

### **NKII Election Statistics 2022**

Of the 19,695 voting papers issued, 4,113 were completed and returned, this being a 20.88% return.

### **Expected NKII Election Statistics 2025**

In 2022, of the 19,695 voting papers issued, 4,113 were completed and returned, this being a 20.88% return. At present 29,119 members are eligible to vote, 5957 have incorrect addresses. If we posted out 23,162 voting papers and had the same 20.88% return, we are looking at 4,836 returned mailers.

25% return = 5,790.5

35% return = 8,106.7

50% return = 11,581

70% return = 16,213.4

Our Goal is 50% which is ambitious and well above the NZ Election average.

### **Kotahitanga Campaign**

Our branding team have created a symbol to represent unity, commitment, and collective action which we believe can be quite impactful. We believe that this conceptual design is the perfect

brand to promote the following objectives to help stimulate whānau participation in our Registration Drive, to booster iwi membership and encourage voting in our iwi election as well as local regional and national elections.

1. Kotahitanga starts with me
2. My vote counts
3. My voice can be heard,
4. My voice matters
5. I can be part of the bigger picture
6. My voice will contribute to a brighter future
7. Participating is my way of showing I care



### ***Logo Design and Elements***

The logo we have created symbolises connection, unity, oneness, the importance of you and your input from wherever you stand, it shows that Mind, Body and Spirit, Hauora, Hau Wānanga, Hau Tinana, Oranga, Tikanga, Kotahitanga linked from all perspectives, uniting our efforts in a nurturing way.

### ***Logo use***

1. We intend to use our new logo in all communications surrounding the election and all affiliated connections ie. the Registration Drive, Email signatures, banners, posters, and the iwi website.

### ***Logo Elements:***

1. **Circle:** This represents "me" making a commitment, wholeness, unity, and the idea that we are all part of something larger. It also emphasizes that this journey is ongoing.
2. **Koru:** A symbol of journey, commitment, leaderships, and personal growth. The smaller koru growth is achievement, small goals along the way, gathering momentum and new growth and understanding.
3. **circles:** Depicting people, groups, perspective, and the interlocking of connecting and sharing common and uncommon views, arms reach outwards to involve and invite in, feel like you belong, coming together with others who share similar beliefs and values.
4. **Colours:** The use of our Paua colours encompass all of Kahungunu. It symbolises the paua known throughout Aotearoa as one of Ngāti Kahungunu's richest resources. The gradient that transitions from a strong black circle transitioned into the softer nurturing heart, the base representing individual commitment, feelings of harmony and unity.

# KOTAHITANGA

