



**14,000**  
**Whānau Voices**

  
**WAINGĀROA**  
Housing Development

  
Te Taiwhenua o  
**HERETAUNGA**

  
Te Pūnaha  
MINISTRY OF MAŌRI AFFAIRS

  
tpk.govt.nz | facebook

  
Te Taiwhenua o  
**HERETAUNGA**

Mauri Ora ki te Mana Māori  
*Strong Whānau, Vibrant Communities*

# Te Haaro Board 2022 - 2024



Chair, Mike Paku



Deputy Chair, Kane Koko



Houngarea  
Heeni Carlson



Kahurānaki  
Leah Hapuku-Annan



Korongatā  
Christine Tamati



Mangaroa  
Thompson Hokianga



Matahiwi  
Ripeka Kireka



Mihiroa  
Donna Keefe



Ōmāhu  
Moana-Lee Mackey



Ruahāpia  
Crystal Edwards



Rūnanga  
Monica Kendrick



Taraia  
Paula Savae



Te Aranga  
Kararaina Kire



Te Āwhina  
Amo Isla Puha



Waimārama  
Bayden Barber



Waipatu  
Annette Harris

**Te Haaro o Te Kaahu ki Tuawhakarere**  
The Hawk sees beyond the horizon to our future



**Mauri Ora ki te Mana Māori**  
Strong Whānau, Vibrant Communities

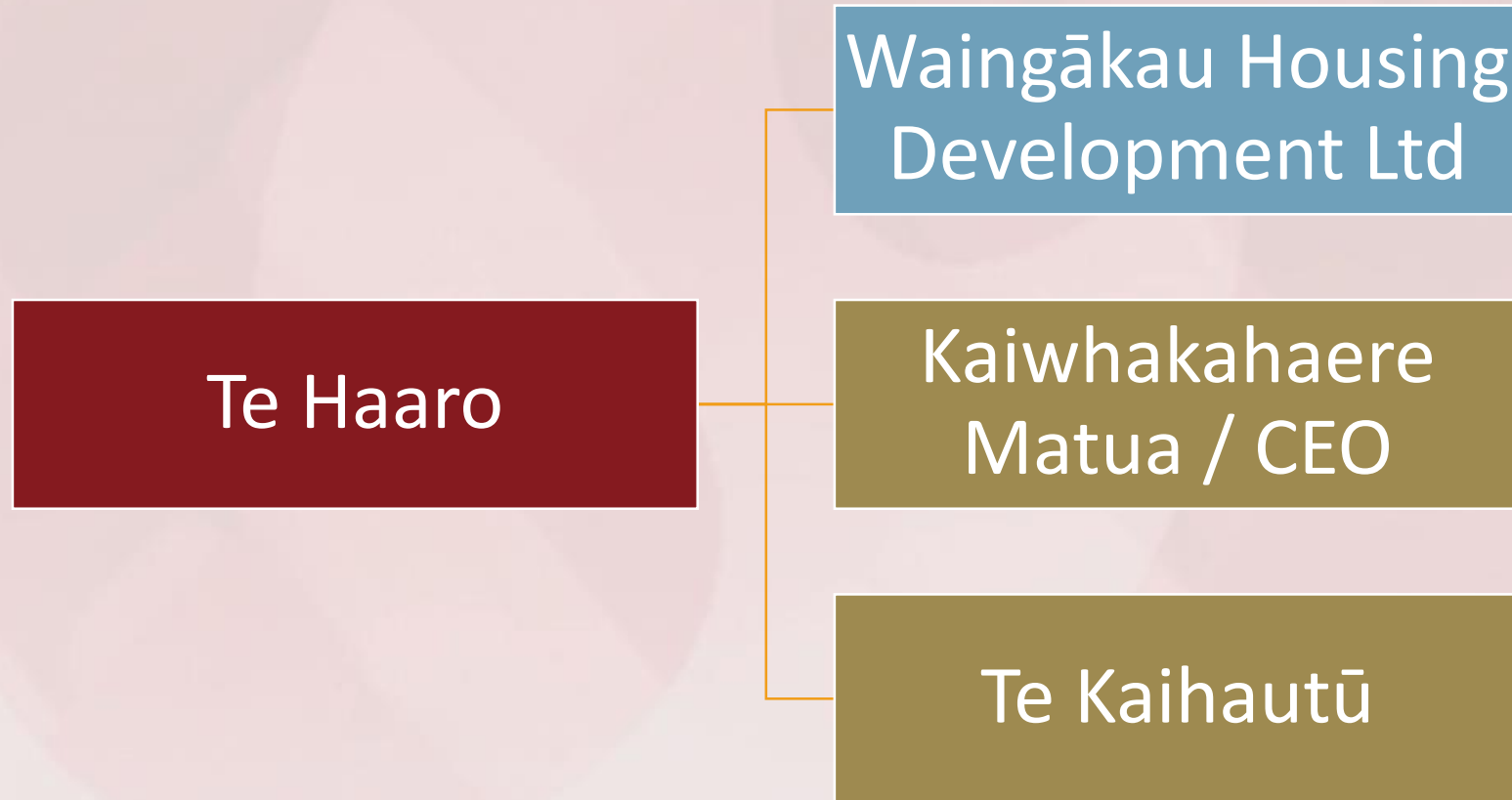
# Ngā Taiwhenua o Ngāti Kahungunu



- Te Wairoa
- Te Whanganui-a-Orotū
- Te Taiwhenua o Heretaunga
- Tamatea
- Tāmaki-nui-a-rua
- Kahungunu ki Wairarapa

**Te Haaro o Te Kaahu ki Tuawhakarere**  
The Hawk sees beyond the horizon to our future

# Te Haaro Trust Structural Overview



# Te Taiwhenua o Heretaunga Overview



## Te Haaro Board of Trustees



Waylyn Tahuri-Whaipakanga  
Kaiwhakahaere Matua



Marei Apatu  
Te Kaihautū



Andre LeGeyt  
Chief Operating Officer GM Āhei



Kara Edwards



Lum Whaipakanga  
Pou Tikanga



Julie Wake  
GM Human Resources



Catherine Sheridan  
Chief Financial Officer



Diana MacDonald  
GM Hauora/  
Oranga Niho



Ry Stinton  
GM Commercial



Teriwa Graham  
GM Information Technology

**Te Haaro o Te Kaahu ki Tuawhakarere**  
The Hawk sees beyond the horizon to our future



**Mauri Ora ki te Mana Māori**  
Strong Whānau, Vibrant Communities

# GOVERNANCE | Te Haaro

Audit & Risk Committee (ARC)

Health & Safety Audit Committee (HSAC)

Quality Risk Management Steering Group (QRMSG)

## OPERATIONS | SERVICE DELIVERY

<b>Finance</b>	<b>Marketing &amp; Communication</b>	<b>Support Services</b>	<b>Quality &amp; Risk Management</b>	<b>Health &amp; Safety</b>
<ul style="list-style-type: none"><li>• Monthly Financial Reporting</li><li>• Accounts Payable</li><li>• Accounts Receivable</li><li>• Cash Management</li><li>• Fixed Assets</li><li>• CAPEX</li><li>• Insurance</li></ul> <ul style="list-style-type: none"><li>• Cashflow</li><li>• Budgets</li><li>• Forecasts – Contracts</li><li>• Group Financial Annual Report</li></ul> <ul style="list-style-type: none"><li>• Financial Audit</li><li>• Financial Modelling</li><li>• RFPs</li></ul>	<ul style="list-style-type: none"><li>• Internal &amp; External Communications across all media platforms</li><li>• Social Media</li><li>• Publications</li><li>• Annual Report</li><li>• Calendar</li><li>• Digital; Photographic and Videography</li><li>• Media Liaison</li><li>• Manage Corporate identity</li><li>• Community Engagemen</li></ul>	<ul style="list-style-type: none"><li>• Fleet Management</li></ul> <ul style="list-style-type: none"><li>• Procurement</li></ul> <ul style="list-style-type: none"><li>• Facilities &amp; Grounds Management</li><li>• Repairs &amp; Maintenance</li><li>• Building Compliance</li><li>• Contractors</li></ul> <ul style="list-style-type: none"><li>• Events Planners &amp; Doers</li></ul>	<ul style="list-style-type: none"><li>• Quality Assurance Mgmt</li><li>• Business Continuity Plan</li><li>• Risk Management</li><li>• CIMS</li><li>• Policies; Procedures; Promapp</li><li>• Legislative Compliance; Standards &amp; Regulations</li><li>• Audits – Internal &amp; External</li><li>• Complaints</li><li>• Compliments</li><li>• Coroner Reports</li><li>• HDC</li><li>• Privacy Breaches</li><li>• Reports of Concern</li><li>• OIA</li><li>• Witness Summons</li></ul>	<p>Incident Management</p> <ul style="list-style-type: none"><li>• * Risk Management</li><li>* Infection Control</li><li>* Audit &amp; Compliance</li><li>* Health &amp; Safety Committee</li><li>* CIMS</li></ul>

## PROJECTS

**Te Haaro o Te Kaahu ki Tuawhakarere**  
The Hawk sees beyond the horizon to our future



**Mauri Ora ki te Mana Māori**  
Strong Whānau, Vibrant Communities

# OPERATIONS

Social Services	Corrections	CHB	Taioira (Clinical/Community)		Housing	Hinengaro	Hau Te Kura
Family Start	AoD Rimutaka/HB Prisons	Mobile Nursing	School based Nursing Te Aute, Flaxmere, Irongate, Peterhead	Say Ah Flaxmere, Irongate, Peterhead	Whare Huakina Emergency Housing Transitional Housing Sustaining Tenancies	Oranga Hinengaro Wairoa, Ahuriri, Heretaunga, Tamatea	Whānau Ora
Poipoia te Mokopuna ECE connect	AoD Youth HB Prison	Te Ara Waiora		He Kai Oranga			Hiwa i te Rangi
MST Rangatahi AoD (HB, Mid-Central, Whanganui)	Te Waireka	Asthma Mgt	Tamariki Ora	Rangatahi Health	HDC Flats	Med Run	Te Wairatahi
Dads Group	DTP Aftercare	He Kai Oranga	Te Ara Waiora Flaxmere	Te Oranga Tautiaki	Social Housing Korowai St Te Ahurutanga	Te Puawaitanga	Whakamana Hub
Whanau Engagement Ed/Training	Family Violence	Kaumatua Ora	Te Haa Matea	Rauora Mirimiri (Flaxmere)		Mahea 12-24yrs	Call Centre
Engage Priority Families ECE	Kaiarataki Reintegration	<b>Rangatahi Services</b> NEET, YP, YPP Attendance (Rangitane) Tihei Rangatahi Crisis Counselling	Parenting/Budgeting YPP Rangatahi	Whanake Te Kura Antenatal	He Kākano	Waiorua Residential Unplanned Respite	<b>Rangatahi Services</b> (Heretaunga) NEET, YP, YPP Attendance Tihei Rangatahi
Te Whare Karamu Teen Parent	Whanau Resilience		Incredible Years Parenting	Te Mana Waiu Breastfeeding Support		Tāwharau Adult Crisis Respite	
Te Puna Whakamarama	Te Pae Oranga Adult/Rangatahi		VNS Teen Parents Support	Te Whare Pora	TAS	Te Poutama Tautoko	
	Transition to Adulthood		Kaumatua Ora Heretaunga				
	SAM's Table						

**Te Haaro o Te Kaahu ki Tuawhakarere**  
The Hawk sees beyond the horizon to our future

# Te Taiwhenua o Heretaunga

Mandated leader of Ngāti Kahungunu ki Heretaunga

**Contracts**

**139  
Vehicles**

**Services  
130**

**480  
Employees  
80% Māori**

**\$52m  
Revenue**

**6807  
Hauora  
Enrolled**

**19  
Properties**

**Funders  
26**

Services Delivered from Te Mahia to Remutaka

**Te Haaro o Te Kaahu ki Tuawhakarere**  
The Hawk sees beyond the horizon to our future





# Are We Prepared?

**Te Haaro o Te Kaahu ki Tuawhakarere**  
The Hawk sees beyond the horizon to our future

  
Te Taiwhenua o  
**HERETAUNGA**

**Mauri Ora ki te Mana Māori**  
*Strong Whānau, Vibrant Communities*

# CIMS

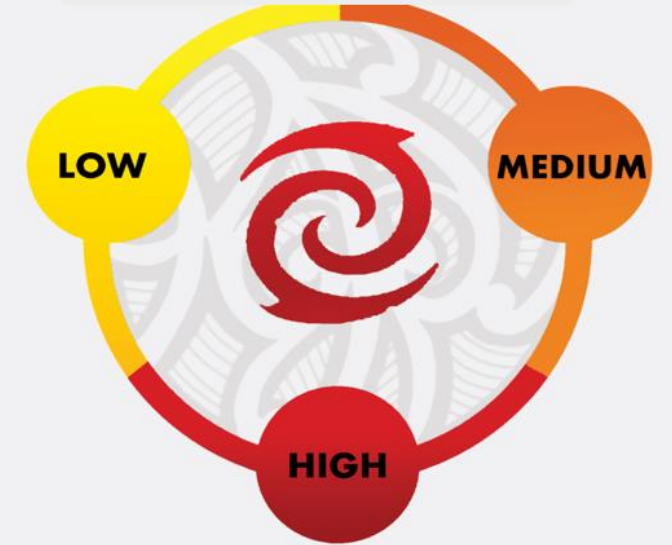
- Controller
- Intelligence
- Logistics
- Operations
- Public Information
- Planning
- Welfare



**Te Haaro o Te Kaahu ki Tuawhakarere**  
The Hawk sees beyond the horizon to our future

# Kia Takatū

## OMAHU MARAE EMERGENCY RESPONSE ACTION PLAN



This PLAN has been created to make sure OUR MARAE, OUR PEOPLE and our wider community are ready in case of a Disaster or Emergency

**Te Haaro o Te Kaahu ki Tuawhakarere**  
The Hawk sees beyond the horizon to our future



Te Taiwhenua o  
**HERETAUNGA**

**Mauri Ora ki te Mana Māori**  
*Strong Whānau, Vibrant Communities*

# Kōrero tohutohu



**Te Haaro o Te Kaahu ki Tuawhakarere**  
The Hawk sees beyond the horizon to our future

  
Te Taiwhenua o  
**HERETAUNGA**

**Mauri Ora ki te Mana Māori**  
*Strong Whānau, Vibrant Communities*



**Te Haaro o Te Kaahu ki Tuawhakarere**  
The Hawk sees beyond the horizon to our future



Te Taiwhenua o  
**HERETAUNGA**

**Mauri Ora ki te Mana Māori**  
*Strong Whānau, Vibrant Communities*



**Te Haaro o Te Kaahu ki Tuawhakarere**  
The Hawk sees beyond the horizon to our future



Te Taiwhenua o  
**HERETAUNGA**

**Mauri Ora ki te Mana Māori**  
*Strong Whānau, Vibrant Communities*

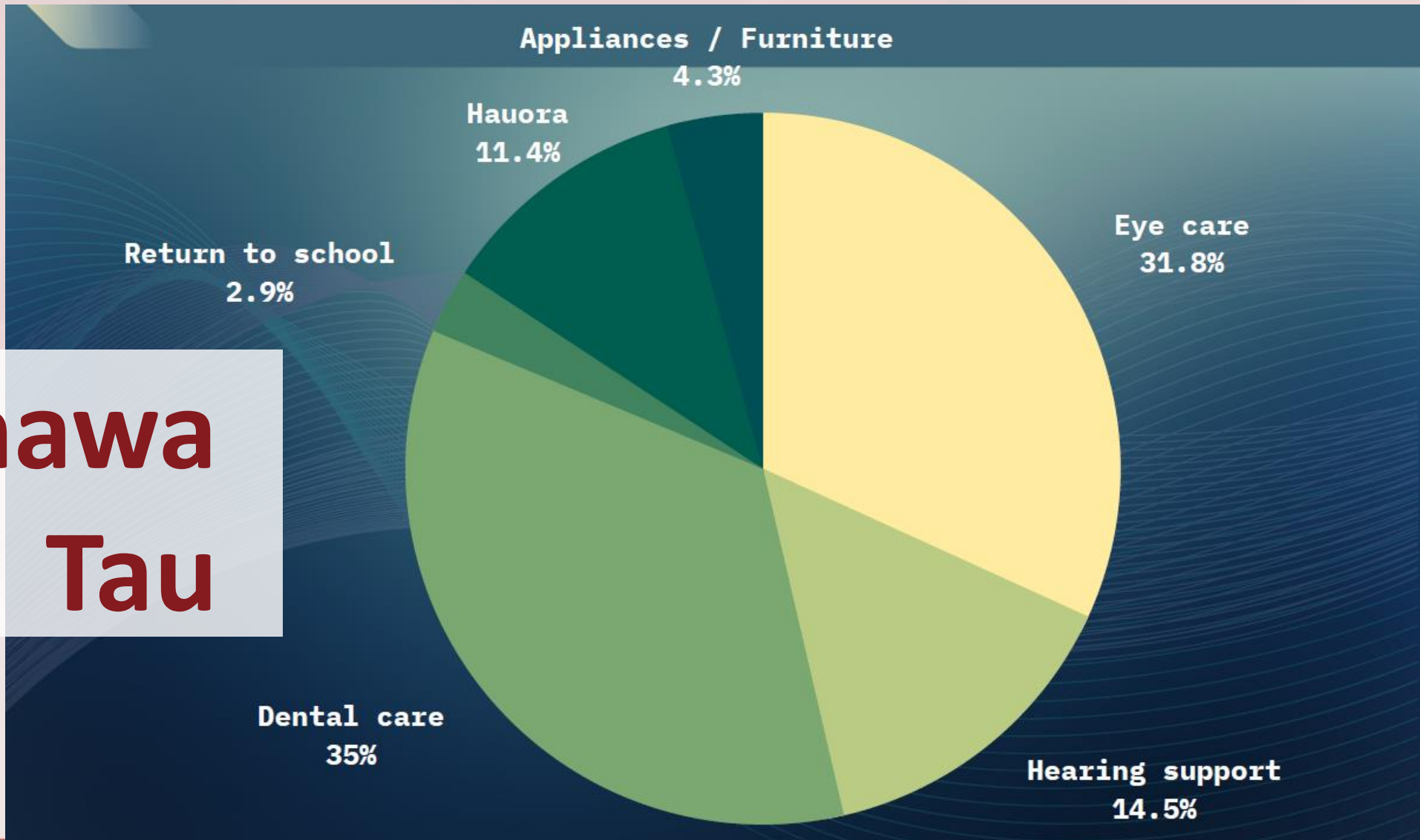


**Te Haaro o Te Kaahu ki Tuawhakarere**  
The Hawk sees beyond the horizon to our future



**Mauri Ora ki te Mana Māori**  
*Strong Whānau, Vibrant Communities*

# Manawa Tau



Te Haaro o Te Kaahu ki Tuawhakarere  
The Hawk sees beyond the horizon to our future





**Ka whati te tai  
ka pao te tōrea**



Te Taiwhenua o  
**HERETAUNGA**

Mauri Ora ki te Mana Māori  
*Strong Whānau, Vibrant Communities*



**Mā te kōrero, kā mohio  
Mā te mōhio, kā mārama**



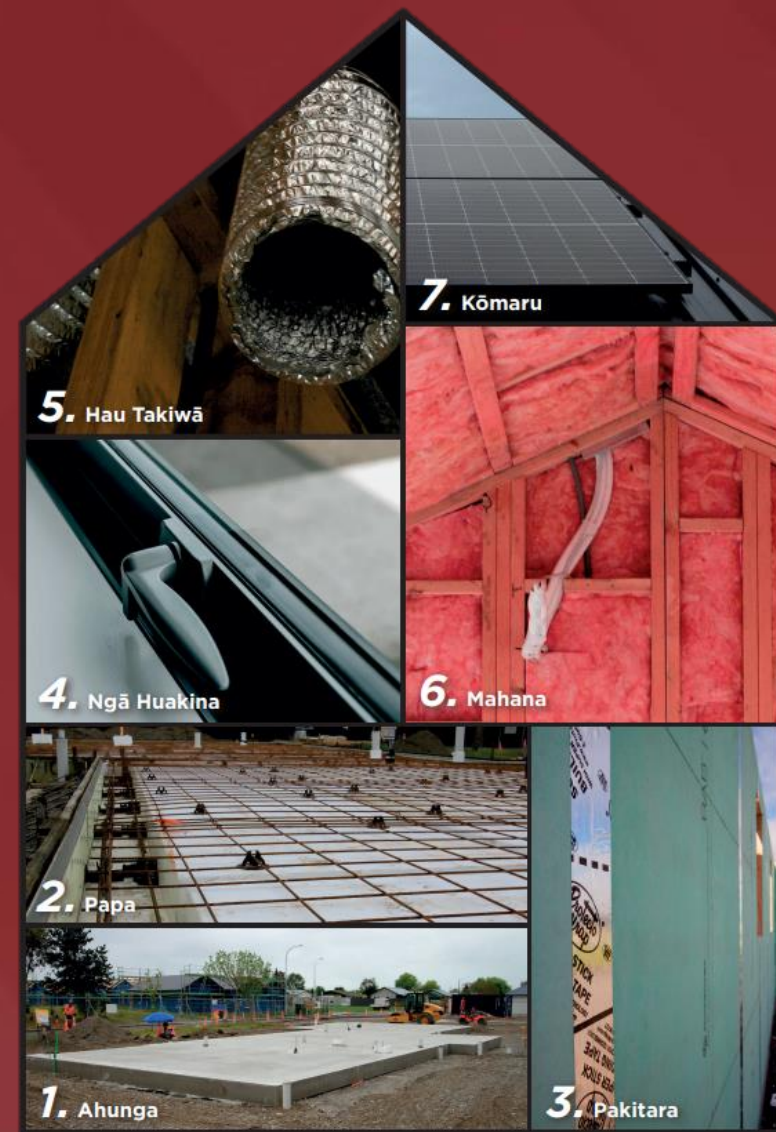
Te Taiwhenua o  
**HERETAUNGA**

Mauri Ora ki te Mana Māori  
*Strong Whānau, Vibrant Communities*

# auk in a auora

## *eal y o es*

1. Ahunga
2. Papa
3. Pakitara
4. Ngā Huakina
5. Hau Takiwā
6. Mahana
7. Kōmaru



# Whare Huakina



Te Taiwhenua o  
**HERETAUNGA**

Mauri Ora ki te Mana Māori  
*Strong Whānau, Vibrant Communities*

# Green Strategy Implementation

**Te Haaro o Te Kaahu ki Tuawhakarere**  
The Hawk sees beyond the horizon to our future



**Mauri Ora ki te Mana Māori**  
*Strong Whānau, Vibrant Communities*

