

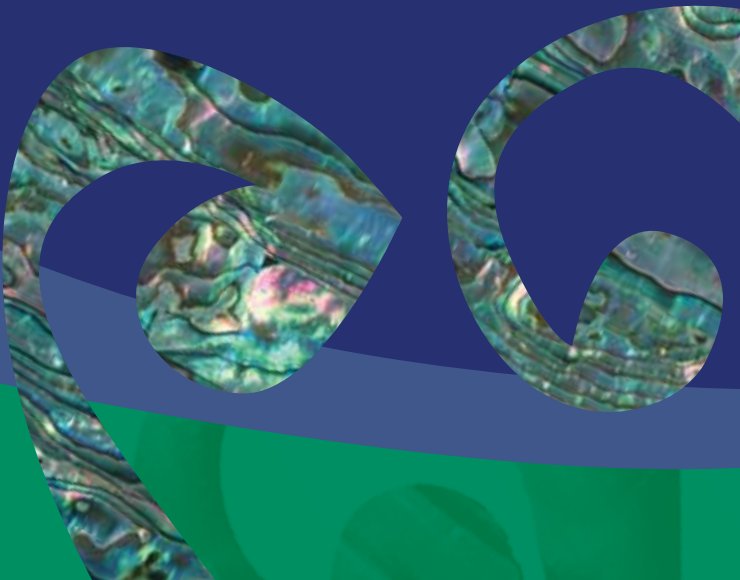
# Hoea rā



Ngāti Kahungunu Iwi  
INCORPORATED

## Annual Report 2008 - 2009

Published November 2009



# Table of Contents

	Page
Chairmans Report	1
Chief Executive's Statement	2
Board 2008-2009	3
Staff Members 2008-2009	3
Tino Rangatiratanga	4-5
Taiao	6-7
Kahungunutanga	8-10
Whanaungatanga - Mauri Ora	11-14
Ngāti Kahungunu Iwi Incorporated Organisation Structure	15
Kahungunu Asset Holding Company - Chairman's Report	16
Statement of Financial Performance	17
Statement of Movements in Equity	17
Statement of Financial Position	18
Notes to and Forming Part of the Financial Statements	19-24
Audit Report	25
Annual Plan 2009-2010	26-IBC

# Chairperson's Report



Te Wairoa hōpūpū hōnengenenge mātangirau tapokorau  
Maunga hāruru ki uta  
Tangitū ki te moana  
Heretaunga haukū nui  
Ararau, hāro o te kāhu takoto noa  
Tīhei mauri ora.

Ngā tini aituā, ngā tini mate, haere ki te tini, ki te mano  
Kua whetūrangihia, tangihia tangihia.  
E ngā tukemata o Kahungunu  
Tīhei mauri ora.

Tamatea Urehaea Pōkaiwhenua Pōkaimoana  
Te Tapere nui o Whātonga Ruahine  
Te Raparapa Wai  
Tīhei Kahungunu.

In last year's report I highlighted the Takitimu Festival and the international financial instability as markers for this year's budget. I am pleased to report that despite a heavy calendar of activity, Ngāti Kahungunu has stayed close to projected budgets with an increase in equity. We have experienced some clunky events creating big swells of potential with the Takitimu Festival being a high profile success in the inaugural gathering of the far flung Takitimu nations.

The Criminal Justice Colloquium, Te Ao Tara Aitū ki te Ara Matua, produced riveting insights into reasons for developing a Kahungunu strategy for addressing crime and punishment. Whakamoe Patu presentations touched the hearts and minds of our people, with the challenge to extend the Iwi energy into this kaupapa.

We joined a revitalization program for a double-hulled Pacific sailing fleet with the agreement to build a waka hourua, to retrace the Takitimu voyaging route. We have finalized our fisheries asset settlement with neighbouring Iwi so that Kahungunu Asset Holding Company can progress freely with a defined quantum of quota and cash.

We launched Tīhei Kahungunu, which is growing wings and wheels. The Te Reo activities have escalated since the completion of the research project. We appointed a CEO after a year of infill and interim leadership.

I was gifted, on behalf of Ngāti Kahungunu, seven acres in Rarotonga by Papa Tangaroa, to establish a Kura o Hawaiki to resurrect the oral traditions of the Pacific, based on the Takitimu epic.

Our iconic events were even more populated, and I acknowledge the staff and the army of volunteers that ensured these events were a success. Aspects of these activities have gone beyond our short term plans but are etched into our 25 Year Vision, and we took the opportunity in their timing.

I am pleased to present this year's Annual Report.

A handwritten signature in black ink, appearing to read 'Ngāhiwi Tomoana'. The signature is fluid and cursive, written on a light blue background.

**Tīhei Kahungunu!**  
**Ngāhiwi Tomoana**

# Chief Executive's Statement



He maioha tēnei ki ngā taituarā, ngā taiaki e kāwhaki nei i a tātou o Ngāti Kahungunu kia eke ki te taumata tiketike, arā koutou ngā tumu whakarei mai i Te Karu o Te Ika tae noa atu ki Te Matau a Māui, tēnei te reo mihi ki a koutou katoa, tēnā koutou, tēnā koutou.

The Ngāti Kahungunu Iwi Incorporated organisation has been supported by a dedicated team of talented and committed staff who have worked together to advance the Ngāti Kahungunu strategic vision. I would like to acknowledge Kym Hamilton for the work she did as Acting General Manager prior to my appointment as Chief Executive. Kym was appointed in July 2008 to ensure the operational and fiscal functions of the organisation were maintained while a process of recruitment for a new Chief Executive continued. I joined the organisation toward the end of the financial year and I am pleased to be able to present this annual report of accountability to the iwi.

I acknowledge the strategic direction and support provided by the Ngāti Kahungunu Iwi Incorporated Board and the work that Ngahiwi Tomoana has done on behalf of the iwi. The organisation has continued to focus its priorities on the following three areas, Tino Rangatiranga, Whanaungatanga and Kahungunutanga. This report has been prepared with contribution from staff and board members to reflect the work done in these priority areas.

A handwritten signature in dark ink, appearing to read 'Meka Whaitiri'.

**Meka Whaitiri**  
**Kaiwhakahaere Matua - Chief Executive**

# Board Members 2008-2009



**Ngahiwi Tomoana**  
*Chairman*



**Haami Hilton**  
*Kaumātua*



**Christine Teariki**  
*Heretaunga*



**Linette Rautahi**  
*Tamaki Nui ā Rua*



**Nelson Rangi**  
*Wairarapa*



**Rill Meihana**  
*Wairoa*



**Robert Ropiha**  
*Tamatea*



**Bevan Taylor**  
*Te Whanganui ā Orotu*



**Te Huia Bill Hamilton**  
*Taurahere*



**Owen Purcell**  
*Taurahere*



**Paora Ammunson**  
*Wairarapa Whānui*



**Aotearoa Karauria**  
*Wairoa*



**Doreen Christie**  
*Taurahere*

# Staff Members 2008-2009



**Meka Whaitiri**  
*Chief Executive*



**Kym Hamilton**  
*Acting General Manager  
Poutiri-A-Kaupapa*



**Naumai Ropitini**  
*Finance Manager*



**Danielle Keil-Lambert**  
*Office Manager*



**Kerrin Fair**  
*Database  
Administrator*



**Ruth Wong**  
*Communications  
Manager*



**Roy Pewhairangi**  
*Administrator  
Kahungunu Violence Free Coordinator*



**Marina Sciascia**  
*Public Relations &  
Branding Manager*



**Rongo Bean**  
*Takitimu Festival  
Administrative Assistant*



**Te Rangi Huata**  
*Events & Promotions  
Manager*



**Ngaire Aben**  
*Te Reo me ona Tikanga  
Strategy and Project Manager*



**Keri Ropiha**  
*Executive Assistant*



**Eru Tahuri**  
*Poutiri-A-Reo*



**Meagan Joe**  
*Poutiri-A-Matauranga*



**Alex Edwards**  
*Kairangahau*



**Ihaia Hutana**  
*Poutiri-A-Reo*

# Tino Rangatiratanga

## **Objectives:**

- Develop position statements and key messages on matters of importance to Ngāti Kahungunu
- Strengthen relationships to advance and advocate iwi positions
- Increase Ngāti Kahungunu Iwi Incorporated research capacity and capability
- Strengthen iwi leadership and accountability

Progression toward the Ngāti Kahungunu Iwi 2026 vision continues to guide the work plans within the organisation. The vision clearly states our underlying principles that have motivated and inspired the work achieved throughout the year. Ngāti Kahungunu Iwi Incorporated has taken a responsible approach to being proactively engaged in issues that impact on whānau, hapū and iwi development. Issues of importance have included te reo and tikanga, whānau violence, the criminal justice system, environment and resource management, economic development and land claims. Position statements on these issues have been disseminated to iwi members and the general public through the iwi newsletter, website, radio networks, at hui and events via iwi spokespeople and through public media.

Ngāti Kahungunu Iwi Incorporated has had a good media presence in the past year largely through Ngahiwi Tomoana as Tumuaki and his involvement and role in regional, national and international activities. Ngāti Kahungunu has continued to develop and strengthen relationships and communications with both government and non government agencies to help advance and advocate iwi development.

In 2008 the Ngāti Kahungunu Iwi Incorporated Board approved the establishment of a Ngāti Kahungunu Iwi Incorporated Research and Development Centre. This development was informed by consultation hui held in 2007 where Ngāti Kahungunu researchers recognised that there was a need for a more co-ordinated approach to research to ensure whānau, hapū and marae are able to realise their aspirations. The purpose of these hui were to:

- capture whānau and hapū aspirations and needs for research, and
- seek whānau and hapū guidance in developing a research framework focused on whānau well-being.

The research objectives established and endorsed by the Board offer Ngāti Kahungunu a chance to look beyond information already held about us and to grow research that will support, define and measure our development as whānau, hapū and iwi in areas that are important to us.

This year, Ngāti Kahungunu Iwi Incorporated research capacity and capability objectives have been supported by Te Puni Kōkiri. The focus has been on the development of an Information and Communication Strategy, succession planning and the preparation of a five year research and development strategy.

# Tino Rangatiratanga

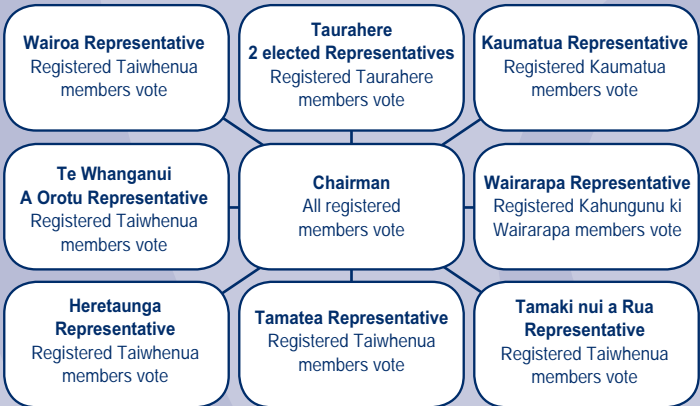
The Ngāti Kahungunu Iwi Incorporated Board is the Iwi authority for Ngāti Kahungunu (Population, 55,946), and is made up of ten members elected as prescribed by legislation. There is one elected member from each of six Taiwhenua / Rohe, one Kaumatua, two elected members representing the five Taurahere, and the Chairman.

The six Taiwhenua / Rohe each have their own Constitutions or Trust Deeds which governs their election processes and aligns with the Ngāti Kahungunu Iwi Incorporated Constitution.

The process ensures representation but not the skill base required for good leadership. With a couple of exceptions, we do not have the “A” team to effectively lead Ngāti Kahungunu into the future. To simply attend meetings is not enough. A two-way accountability to whānau, to marae / hapū, to Taiwhenua / Rohe, and to the Iwi, would be a big help.

Strategic thinkers and planners with good networking skills are needed, those able to think outside their own backyard for the greater good of the whole of Kahungunu – who, after informed and robust debate, can make good accountable decisions that will offer choices to whānau, hapū, and iwi for their own positive development, economically, socially, culturally and spiritually.

## *The Ngāti Kahungunu Iwi Incorporated Board Representation*



## **Objectives:**

- Develop proactive responses to taiao issues for whānau, hapū and iwi
- Develop coastal marine fisheries plan to manage the natural resources of the coastal marine environment

Ngāti Kahungunu Iwi Incorporated has continued to advocate for whānau, hapū and iwi interests over a broad range of taiao issues. We have engaged with government ministries over climate change and the Emissions Trading Scheme, new trends in Freshwater Management, Biosecurity and Bioprospecting, Foreshore and Seabed, and the Oceans policy. The intensification of land use has resulted in increasing problems for some of our iconic rivers and we endorse a co-governance approach so our hapū can be more involved. At the regional level we have promoted policy to enable greater consideration for tangata whenua priorities within local government decision-making. Engagement has occurred around:

- The Hawke's Bay Coastal Environment Plan
- The Horizons One Plan
- The National Policy Statement for Freshwater Management
- Heretaunga Plains Urban Development Strategy
- The National Environmental Standard for Ecological Flows

In the past, Ngāti Kahungunu Iwi Incorporated has provided logistical support and assistance to hapū on local issues. However, with hapū wanting to play a greater role and the changing dynamics due to Treaty negotiations, Ngāti Kahungunu Iwi Incorporated has signaled a gradual movement away from local issues so that hapū can express their rangatiratanga and tikanga interests through statutory processes. Ngāti Kahungunu Iwi Incorporated will continue to play a supportive role.

The change of government at the last election has meant a change of direction and focus on the environmental front and we will need to maintain a close watch on emerging trends. On the one hand discussions have continued over the repeal of the Foreshore and Seabed Act, but amendments to the Resource Management Act suggest restricted access for Māori to environmental decision-making due to increased costs. Ngāti Kahungunu Iwi Incorporated will continue to advocate at the regional and national levels to support Kahungunu whānau and hapū aspirations and development at the local level.

In 2008, a group of representatives from ngā hapū of Ngāti Kahungunu, Ngāti Kahungunu Iwi Incorporated, and the Kahungunu Asset Holding Company came together to form a steering group to oversee the development of a strategic plan for the preservation of ecosystems that sustain Fisheries, Coastal/Marine areas and the management of stocks within them. The steering group is also supported by officials from Te Ohu Kaimoana, the Ministry of Fisheries, and Dr Adele Whyte from Victoria University of Wellington.



# Taiao

The name of the steering group is 'Kahungunu Ki Uta, Kahungunu Ki Tai'. This name reflects the groups objective which was to develop a strategic plan to guide the integrated management of fisheries, freshwater and coastal resources within the Kahungunu rohe - mai i Paritū tai atu ki Turakirae, from the mountains to the foreshore and from the foreshore to Hawaiiiki. In 2008, the steering group held consultation hui within the Kahungunu rohe to consult with whānau and hapū. This consultation informed and contributed to the development of the Kahungunu ki Uta Kahungunu ki Tai Strategy. In June 2009 the steering group signed off on the implementation plan for the Kahungunu Ki Uta Kahungunu Ki Tai Strategy.

# Kahungunutanga

## **Objectives:**

- Support the implementation of Ngāti Kahungunu reo and tikanga goals
- Develop and promote Ngāti Kahungunu cultural standards and aspirations
- Realise Ngāti Kahungunu cultural goals

Ngāti Kahungunu Iwi Incorporated has continued to deliver the Community Based Language Initiatives Project (CBLI) with the support of the Ministry of Education. The objectives of the project are to:

1. Contribute to the revitalisation of te reo Māori through the Ngāti Kahungunu strategic plan – He Mahere Rautaki Hai Haumanu i Te Reo o Ngāti Kahungunu 2006 - 2027;
2. Promote the importance different generations play in the transmission of language knowledge; and
3. Improve Māori language education outcomes through engaging whānau, hapū and iwi in Ngāti Kahungunu-specific language revitalisation activities.

Ngāti Kahungunu entered into this project in 2005 and has over the past four years focused on implementation and refinement of the Ngāti Kahungunu Strategic Plan for the Revitalisation of Te Reo o Ngāti Kahungunu 2006-2027. In 2008, a Formative Evaluation was undertaken to review our progress towards achieving the objectives of this Strategic Plan. We are confident that the activities of the CBLI project and the activities of Ngāti Kahungunu Iwi Incorporated have made considerable contribution towards the implementation of Ngāti Kahungunu reo and tikanga goals. The following are examples of activities undertaken to achieve the Short Term Goals of the Strategic Plan for the Revitalisation of Te Reo o Ngāti Kahungunu 2006-2007.

The *Whakaoho* merchandise has promoted critical awareness and consciousness across the Kahungunu rohe, out to our Taurahere groups, and beyond to Kahungunu descendants living overseas, about the importance of Kahungunu language re-gensis.

The *Whakamana* research activities including the development of the Ngāti Kahungunu Kaumātua interview series, the Kahungunu Radio Interview series, and the digitisation of selected Te Matorohanga manuscripts are highlights from our activities to revitalise unique Ngāti Kahungunu reo and tikanga.

Within the *Whakaako* strand, engagement with te reo providers within the Kahungunu rohe has been premised on supporting and improving opportunities to learn te reo and specifically te reo o Ngāti Kahungunu. Opportunity to learn te reo o Ngāti Kahungunu is also a key objective of the Ngāti Kahungunu Cultural Standards project. Ngāti Kahungunu language resources have been developed for distribution to whānau, hapū, schools and their communities in support of the Ngāti Kahungunu Cultural Standards project.

There was keen uptake of the Whānau Language Planning facilitated through the *Whakamahi* project. Whānau groups were supported throughout the Kahungunu rohe and in our Taurahere in Kirikiriroa and Tamaki Makaurau. The Kahungunu Online Language Learning opportunities created at LearnMāori.co.nz is a whakamahi activity that is growing in profile and increasing in registrations.

# Kahungunutanga

Significant Ngāti Kahungunu Iwi Incorporated initiatives, activities, and events have promoted *Whakawhanaungatanga* and positive relationships with whānau, hapū, iwi and all stakeholders. These events include Kahungunu Waitangi Day, Kahungunu Matariki Celebrations, the Inaugural Takitimu Festival, the Ngāti Kahungunu AGM Pā Sports, and the Regional Kapahaka Festival. These initiatives have encouraged engagement with Kahungunu whānau and hapū, other Iwi nationally, other nations internationally. The initiatives have also promoted engagement and positive relationship with non-Māori who support the language revitalisation goals of the Ngāti Kahungunu.

Ngāti Kahungunu Iwi Incorporated has completed Year 1 of the Ngāti Kahungunu Cultural Standards project supported by the Ministry of Education. The project focuses on Māori achievement and realizing the aspirations of whānau and hapū of Ngāti Kahungunu for the achievement of our children in education. A basic assumption underpinning the project is the belief that knowing the language and culture of Ngāti Kahungunu is essential for the cultural and educational wellbeing of Ngāti Kahungunu children, as well as other children in schools within the rohe.

A key outcome of this project has been the development of cultural standards for early childhood and schools in the Kahungunu rohe. This year, the Ngāti Kahungunu Cultural Standards Framework was developed in collaboration with whānau, hapū and Iwi knowledge holders, and the education sector. We have also developed support programmes and resources to assist early childhood centres and schools to use the Cultural Standards to help increase Māori achievement and parent involvement in the education success of our children.

The revitalization of Ngāti Kahungunu reo and tikanga is important to our identity as Kahungunu. The Cultural Standards project will assist in revitalizing our reo and tikanga and develop teacher professional development programmes. The Ngāti Kahungunu Cultural Standards Framework will be implemented to assist in the teaching and learning of Kahungunu knowledge. The standards will incorporate views from whānau and hapū consultation and the principals, teacher, and education communities.

Ngāti Kahungunu Iwi Incorporated is committed to building opportunities for Kahungunu whānau to retain our cultural identity. The Tihei Kahungunu booklet and CD were launched this year and we have received a strong and positive response from our iwi membership across Aotearoa. The Tihei Kahungunu concept derived out of marae hiko consultation process initiated in 2001. Iwi leaders visited the 90 marae in Kahungunu to introduce the 25 year vision. During these visits iwi leaders received requests for the compilation of iconic, classic Kahungunu waiata, haka, karakia, pepeha, history and ancestry. The need for this was also driven by the fact that 64% of Kahungunu descendents live outside the Kahungunu rohe. In the coming year, Tihei Kahungunu wānanga will be held across the Kahungunu rohe and participants will have the opportunity to learn the Kahungunu History, Whakapapa, Karakia, Mōteatea, Haka and Himene contained in the booklet.

Ngāti Kahungunu Iwi Incorporated is dedicated to working on projects that support the Cultural Vision of the iwi. This year we held the Inaugural Takitimu Festival 2008. This project supports the establishment of Whare Wānanga. These and other Te Reo publications, musical, theatrical and film productions are being developed to support the progress and survival of Kahungunutanga.

# Kahungunutanga

## Takitimu Festival

The November 2008 Takitimu Festival was a highlight of the year for Ngāti Kahungunu Iwi and successfully brought together thousands of descendants of the Takitimu canoe from Kahungunu, Tairāwhiti, Taitokerau, Taitonga, the Cook Islands, Samoa, Tahiti, Fiji and Tonga. Dignitaries included Kingi Tuheitia, Pa Ariki Paramount chief of vaka Takitimu in the Cook Islands, the King of Maupiti from Tahiti and Takitimu iwi leaders,



Over 20,000 visitors and locals enjoyed 5 days of pageantry, kinship, exploration and rediscovery through wananga, song, dance, comedy, visual arts, food and dialogue. The festival was managed by 200 volunteers and staff working in seven independent teams with support from twenty product and service suppliers both on and off site.

Takitimu – Hawaiki  
Tihei Mauri Ora!

## Te Waka Hourua

The double-hulled waka voyages have been fantasized, mythicized and criticized by kai-korero, historians and sceptics in the past. The opportunity to own one that could re-sail the Takitimu route through the Pacific and bring to reality one of the greatest sailing adventures of all time was too good to ignore. Te Matau-a-Maui is a Waka Hourua that will belong to Ngāti Kahungunu. Launched earlier this year, the Waka Hourua will be utilized to reclaim the ancient sailing and navigational skills of our tipuna and afford the chance for our mokopuna to sail the trackless oceans of Kiwa. But it also provides sailing opportunities in the modern sailing world of Team New Zealand and so on. In this age of cyberspace, holograms and nano-technology, there must always be a place for the ancient skills practiced by our tipuna. Te Matau-a-Maui takes the romantic ideals of 1000 years and turns them into reality for this generation.



# Whanaungatanga - Mauri Ora

## Objectives:

- Support the implementation of the strong healthy and vibrant whānau programmes
- Provide charitable objects to the benefit of members

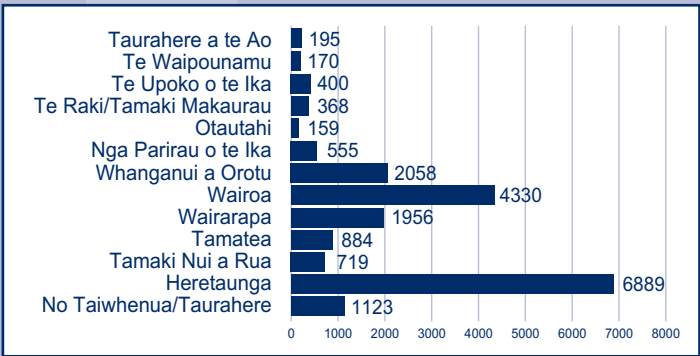
## Registrations

At the time of the last Census in 2006, 55,946 people, or 9 percent of the total population of Māori descent, belonged to Ngāti Kahungunu, a slight increase from 51,552 people in 2001.

Ngāti Kahungunu Iwi Incorporated currently has 19,806 registered members. 938 members registered during this last financial year. The bar graph below indicates members by Taiwhenua and Taurahere. The pie graph shows the increase of new members by area.

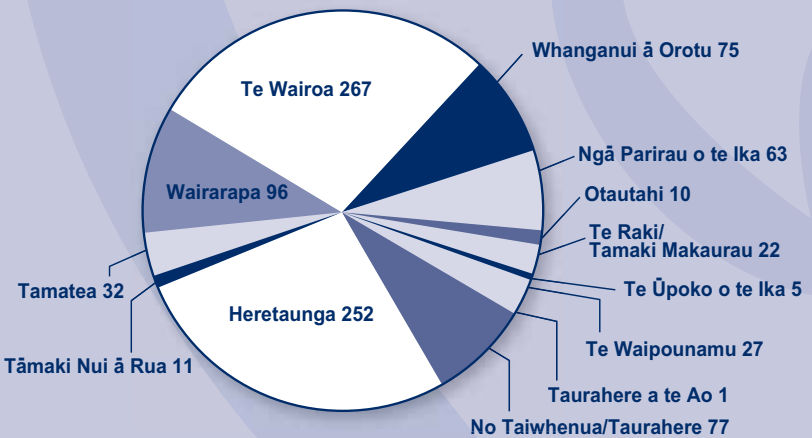
We continue to promote registration at events and through our communication networks.

### Total Members by area



### New Members by area

1st July 2008 - 30th June 2009



# Whanaungatanga - Mauri Ora

## Communications

Ngāti Kahungunu Iwi Incorporated is committed to communicating with its members by providing data online via the iwi website ([www.kahungunu.iwi.nz](http://www.kahungunu.iwi.nz)), newsletter Hoēa Rā, consistent up to date 'panui ki te iwi' emails, Radio Kahungunu announcements, and hui reports via Taiwhenua, Taurahere and Board delegates. This year the Public Relations team focused on the promotion of iwi events and activities, iwi media affairs, the maintenance of the registration and nomination databases, and the provision of ongoing support to Taiwhenua and Taurahere. A website based calendar of events allows whānau to keep abreast of iwi activities and opportunities.

## Sponsorship

Cultural and sporting pursuits are an important aspect of personal, whānau, hapū and iwi development. This year Ngāti Kahungunu Iwi Incorporated distributed sponsorship funding to 39 individuals and groups to encourage and recognise the pursuit of cultural and sporting excellence by Ngāti Kahungunu. Recipients represented and promoted Ngāti Kahungunu in either a national or international forum.

Individual or Group	Event or Tournament
Wikitoria Turner	Manu Aute making project
Wairoa College	Takitimu Cultural Heritage promotions
Wairoa Māori Film Festival Society	Wairoa Māori Film Festival
Te Kura Kaupapa Māori o Ngāti Kahungunu ki Heretaunga	Gala Merchandise
Tomoana Freezing Works 'Ladies'	Tomoana Works Reunion
Shaan Waru	NZ Touch Māori Womens
Te Kura Kaupapa Māori O Ngāti	Primary Schools Kapa Haka
Sports HB Wairoa	2008 Wairoa Sportsperson of the year
Racheal Downs	NZ Maori Hockey Tournament
Joanne Rosandich	Cultural trip to Padova Italy
NZ Māori Rugby League Inc	National Tournament - Tane and Wahine
Erena Tomoana	Guillin China Cultural Exchange
Deena Puketapu Basketball	International Koru Basketball Tournament
Maia Wati	International Koru Basketball Tournament
Anaru Bartlett	Te Matau A Maui Touch Tournament
Zack Makoare	Rangitahi Taiao Wananga
Te Iwi o Rakaipaaka Inc	Rakaipaaka Iwi Day
Candis Cardie	Under 21's National Touch Tournament
He Kahui Wairarapa	Wairarapa Kapa Haka Festival
Matthew Bird	Under 13's Basketball Tournament
Tidal Arts Incorporated	Cultural Art Exhibition
Te Rerenga Kotuku Kapa Haka	Te Matatini National Kapa Haka Festival
Shiana Rose Makere Harris	International Koru Basketball Tournament
Jump Basketball	Bay Hawks Basketball Team
Jayda Martin Fitzharris	International World Junior Surfing Tournament
Kelly Huata Hook	International Junior Softball Tournament

# Whanaungatanga - Mauri Ora

Individual or Group	Event or Tournament
Rita Hokianga	International Junior Softball Tournament
Hurunui o Rangi Marae	Wairarapa Kaumatua Council Ball
Ashleigh Ahipene	International Kickboxing Tournament Thailand
Geoff Ahipene	International Kickboxing Tournament Thailand
Hukarere Old Girls Association	Hukarere Wearable Arts Celebrations
Flaxmere Primary School	Te Kura Kaupapa Cultural Event
Karaitiana Aranui	International Softball Tournament
Jocelyn Te Huia	International Handball Tournament
Waipatu Māori Catholic Club 60th Jubilee Committee	Waipatu Māori Catholic Club Reunion
Ngāti Kahungunu Raranga Committee	National Weavers Hui
Tangoio Marae	Māori Womens Breast Cancer Awareness Dinner
Aaron Kuru	Under 19 Softball National Tournament
Tangina Kaukau	World Hip Hop Championships

## Scholarships

Ngāti Kahungunu Iwi Incorporated acknowledges education as the key to personal, whānau, hapū and iwi development. This year the iwi board identified three strategic areas to promote 'Research Scholarships' for the 2009 scholarship round. A total of three \$5000.00 scholarships were distributed to postgraduate students undertaking research in the area of Te Reo, Environmental Science and Information & Communication Technology. The remaining \$15,000 was distributed as a 'General Scholarship' which was targeted to support full time Ngāti Kahungunu final year undergraduate and post-graduate tertiary students. We congratulate the following taura and look forward to their support with iwi affairs in the future.

NAME	COURSE OF STUDY	ROHE
Ewan James Pohe	RESEARCH SCHOLARSHIP	Te Upoko o Te Ika
Henare Waihape	RESEARCH SCHOLARSHIP	Wairoa
Whare Isaac Sharland	RESEARCH SCHOLARSHIP	Heretaunga
Dione Neri	Bachelor of Nursing	Wairoa
Eleanor Brittain	Bachelor of Arts/Major in Māori and Psychology	Wairoa
Abbie Robinson	Bachelor of Nursing	Wairarapa
Blair Tiaki Bennett	Bachelor of Sport and Leisure	Wairoa
Iria Te Rangi Halbert	Bachelor of Māori Law and Philosophy	Heretaunga
Jeremy Tatere MacLeod	Bachelor of Arts Māori Honours	Heretaunga
John Mikaera Haapu	Bachelor of Education Graduate Diploma of Teaching (PE)	Otautahi
Joseph Taurua Terrill	Bachelor of Arts Māori	Wairoa
Kahu Donovan Te Whaiti	Bachelor of Communications	Wairarapa
Kate Elizabeth Coles	Bachelor of Teaching/ Bachelor of Science	Te Upoko o Te Ika



# Whanaungatanga - Mauri Ora

NAME	COURSE OF STUDY	ROHE
Katherine Pere	Maunga Kura Toi - Bachelor of Māori Art	Wairoa
Kylie Apiti	Masters of Applied Psychology	Wairoa
Leland Lowe Ruwhiu	Bachelor of Honours Psychology	Heretaunga
Lesley Cherise Tawhai	Bachelor of Applied Social Sciences	Te Whanganui A Orotu
Matariki Ngarongo Brown	Bachelor of Arts Māori	Wairoa
Mathew Mullany	Bachelor of Arts – Major in History & English Literature	Heretaunga
Mathew Nikolas Skokandich	Bachelor of Computing Systems	Wairoa
Mere Joslyn Whaanga	Doctor of Philosophy Tikanga Māori (PHD)	Wairoa
Moira McGarva	Bachelor of Applied Social Sciences	Heretaunga
Nadita Rose Beauchamp	Bachelor of Arts majoring in Social Policy and Anthropology	Tamaki Makaurau
Penelope Whitwhiti	Bachelor of Arts Māori Honours	Heretaunga
Piri Te Raina Ferris	Post Graduate Diploma Teaching (Primary)	Tamatea
Riki Lee Toki	Bachelor of Computer Systems	Wairarapa
Simone Marie Williams	Bachelor of Visual Arts & Design	Te Whanganui A Orotu
Tania Teresa Tapine	Postgraduate Diploma of Secondary Teaching	Wairoa
Te Whaiwhaia Pumau Hemi Ritchie	Bachelor of Sport and Leisure Studies	Wairarapa
Turina Kaa Wehi	Bachelor of Arts Te Reo Māori	Wairoa
Virginia Gail Ngapera Barlow	Bachelor of Environmental Design	Wairoa
Wayne Taylor	Poupou Matauranga Rorohiko	Wairoa
Christina Whitney Marshall	Bachelor of Science	Wairoa
Zoe Ann Aranui	Bachelor of Arts Māori	Te Whanganui A Orotu

## Events

Ngāti Kahungunu Iwi Incorporated produces events with the goal to strengthen cultural and communal ties, build pride in Kahungunutanga and provide economic opportunities for iwi members from such interaction.

The AGM Pa Sports Day at Splash Planet last year proved popular with 32 marae/whānau groups participating with 1100 players competing in 66 teams and 2,000 supporters.

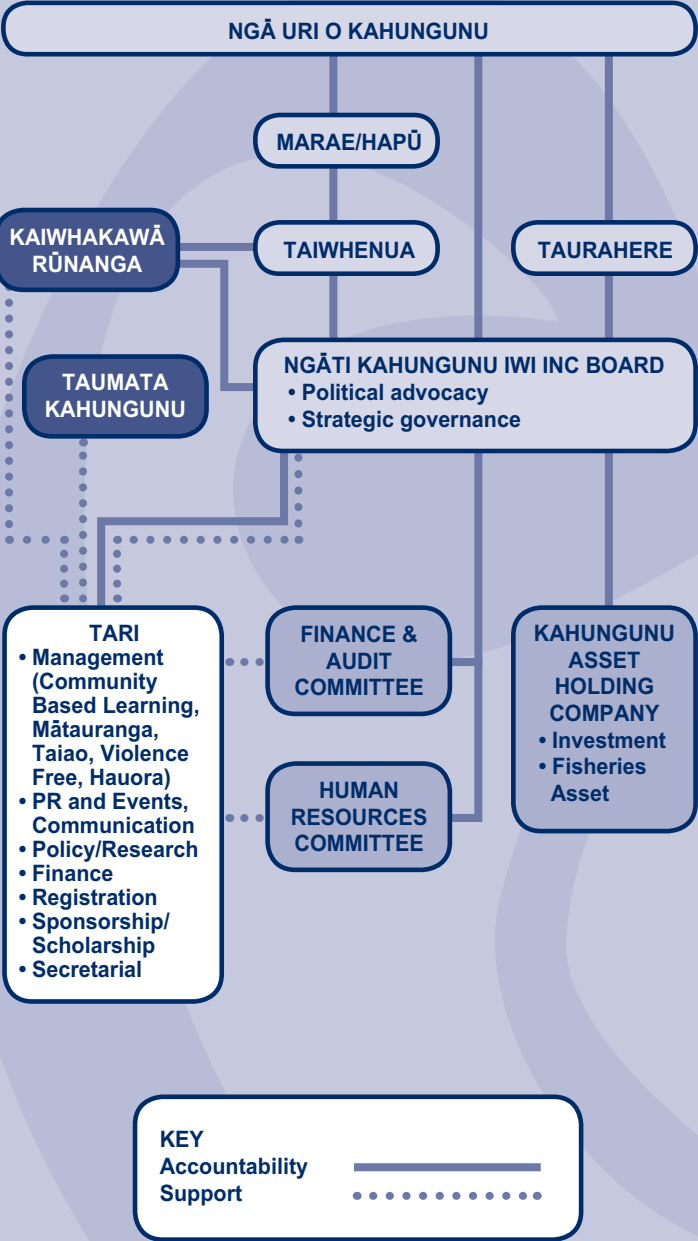
This year Kahungunu Waitangi Day event attracted 12,000 iwi members and six Matariki events attracted 14,000 participants. Another 2,000 people attended 32 smaller Matariki events funded by the iwi and Te Puni Kokiri. 90,000 students took part in a region wide Newspaper in Education Matariki project sponsored by Ngāti Kahungunu Iwi Incorporated.

Māori business has benefited from these events by providing services in event management, security, labour, fireworks, entertainment and sales of food, craft, artwork, merchandise, fashion accessories, clothing and taonga.

Ngāti Kahungunu Iwi Incorporated's long term plan is for these events to become the premier seasonal gathering for the region at that time of year.



# Kahungunu Iwi Inc Organisation Structure 2008-2009



# Kahungunu Asset Holding Company Report

## Chairman's Report for the year 2008 - 2009

### Tīhei Mauriora

He hōnora, he kororia, he maungārongo ki te whenua  
He whakaaro pai ki ngā tāngata katoa.  
Ka mihi rā ki ō tātou mate e hinga mai rā, e hinga atu rā.  
Haere koutou ngā mate haere, haere  
Moe mai koutou i roto i te Ariki  
Ka piti hono, tātai hono,  
Rātou te hunga mate kia rātou  
Ka piti hono, tātai hono, tātou te hunga ora kia tātou  
Tēnā tātou katoa



It is my pleasure to present to you the annual report of Kahungunu Asset Holding Company Limited (KAHC) for the year ended 30 of June 2009.

Kahungunu Asset Holding Company Limited (KAHC) was established in 2005 by Ngāti Kahungunu iwi Incorporated (NKII) to receive and manage the Treaty of Waitangi Fisheries settlement on behalf of Ngāti Kahungunu. Since then the company's role has been expanded to manage other assets of Ngāti Kahungunu Iwi Incorporated.

The key assets owned by KAHC include fishing quota, shares in Aotearoa Fisheries Limited (who in turn own 50% of Sealord and a range of other seafood companies), shares in Napier Mussels Limited, shares in Fiordland Lobster Company Limited and cash.

The company has the following objectives:

- To build intergenerational wealth for Ngāti Kahungunu
- To maximise the financial return on the assets
- To build a sustainable capital base for the future.

The Company's strategy includes diversification of the asset portfolio. The company has received funds from the shareholder, from the sale of property assets, to reinvest in commercial property.

The operating profit for the year 2008 was \$2,028,815 compared to \$2,458,049 the previous year.

I am also pleased to report an increased equity position of \$ 34,370,866 for the year ended 30 June 2009 compared to \$33,742,051 for the 2007 year. This increase in equity is posted after payment of the \$1,400,000 dividend to the shareholder, Ngāti Kahungunu Iwi Incorporated.

I take this opportunity to thank the Directors for their co-operation and the wisdom that has been evident in the deliberations of the Board to date.

Kāti mō tēnei rīpoata  
Tēnei te mihi kia koutou e pae nei  
Tēna koutou katoa

  
**Harry Haerengarangi Mikaere**  
Chair



Kahungunu Asset Holding Company Directors  
from left: Paora Ammunson, Chris O'Reilly,  
Peter Brierley, Christine Teariki, Harry Mikaere.

# Statement of Financial Performance

FOR THE YEAR ENDED 30 JUNE 2009

	Consolidated		Parent	
	2009	2008	2009	2008
	\$	\$	\$	\$
<b>INCOME</b>				
Administration	425,751	647,987	247,687	385,299
Hi Ika	2,607,608	2,791,812	53,216	11,000
Matauranga	341,854	360,672	341,854	360,672
Hauora	197,202	207,147	197,202	207,147
Mauri Ora	401,752	128,203	401,752	128,203
Taiao	33,886	2,241	33,886	2,241
Housing	-	10,000	-	10,000
Merchandising	7,166	8,949	7,166	8,949
Governance	931,635	23,950	2,240,204	1,423,950
2	4,946,855	4,180,961	3,522,967	2,537,462
<b>LESS EXPENDITURE</b>				
Administration	984,273	791,121	760,699	707,250
Hi Ika	496,102	425,204	107,598	35,432
Communication	59,914	39,516	59,914	39,516
Matauranga	390,022	360,672	390,022	360,672
Hauora	170,432	207,147	170,432	207,147
Mauri Ora	852,000	271,927	852,000	271,927
Taiao	59,356	17,447	59,356	17,447
Housing	-	10,000	-	10,000
Merchandising	4,324	7,665	4,324	7,665
Governance	674,764	453,095	493,327	327,659
3	3,691,187	2,583,794	2,897,672	1,984,714
Net Surplus/(Deficit) for year	1,255,668	1,597,167	625,295	552,748

# Statement of Movements In Equity

FOR THE YEAR ENDED 30 JUNE 2009

Opening Equity as at 1 July	35,913,466	35,109,129	3,372,977	3,613,059
Net Surplus/Deficit for the year	1,255,668	1,597,167	625,295	552,748
Total recognised revenues & expenses	1,255,668	1,597,167	625,295	552,748
Less: Taiwhenua/ Taurahere distribution	4	- (792,830)	-	(792,830)
Closing Equity as at 30 June	5	37,169,134	3,998,272	3,372,977

These financial statements must be read in conjunction with the accompanying notes.

# Statement of Financial Position

AS AT 30 JUNE 2009

	Consolidated		Parent		
	2009	2008	2009	2008	
	\$	\$	\$	\$	
<b>ASSETS</b>					
<b>NON CURRENT ASSETS</b>					
Property	6	-	298,699	-	298,699
Motor vehicles & plant	7	133,826	142,264	129,980	140,839
Quota	8	9,796,871	9,436,871	-	-
Investments and advances	9	20,847,070	20,615,887	1,218,485	1,221,152
<b>Total Non Current Assets</b>		<b>30,777,767</b>	<b>30,493,721</b>	<b>1,348,465</b>	<b>1,660,690</b>
<b>CURRENT ASSETS</b>					
Bank and cash	10	9,173,533	8,177,420	4,352,945	4,452,589
Debtors		273,432	306,309	323,413	298,303
Investments and advances	9	-	-	1,000,000	-
Prepayments		11,386	20,966	11,386	20,966
Stock on hand	11	2,000	7,268	2,000	7,268
Accrued income		235,647	129,063	109,388	50,673
<b>Total Current Assets</b>		<b>9,695,997</b>	<b>8,641,026</b>	<b>5,799,131</b>	<b>4,829,799</b>
<b>TOTAL ASSETS</b>		<b>40,473,763</b>	<b>39,134,747</b>	<b>7,147,596</b>	<b>6,490,489</b>
<b>LIABILITIES</b>					
<b>NON CURRENT LIABILITIES</b>					
Vehicle lease	12	-	16,650	-	16,650
<b>Total Non Current Liabilities</b>		<b>-</b>	<b>16,650</b>	<b>-</b>	<b>16,650</b>
<b>CURRENT LIABILITIES</b>					
Creditors		467,786	460,068	312,481	356,299
Provisions	13	2,506,253	2,142,423	2,506,253	2,142,423
Vehicle lease within 1 year	12	16,650	16,650	16,650	16,650
Taiwhenua/Taurahere grants payable	4	45,429	367,149	45,429	367,149
Income in advance		268,512	218,341	268,512	218,341
<b>Total Current Liabilities</b>		<b>3,304,629</b>	<b>3,204,631</b>	<b>3,149,324</b>	<b>3,100,862</b>
<b>TOTAL LIABILITIES</b>		<b>3,304,629</b>	<b>3,221,281</b>	<b>3,149,324</b>	<b>3,117,512</b>
<b>EQUITY</b>					
Retained earnings	5	4,983,070	3,879,537	2,952,159	2,478,999
Reserve fund	5	1,046,113	893,978	1,046,113	893,978
Fisheries settlement assets	5	31,139,951	31,139,951	-	-
<b>TOTAL EQUITY</b>		<b>37,169,134</b>	<b>35,913,466</b>	<b>3,998,272</b>	<b>3,372,977</b>
<b>TOTAL LIABILITIES AND EQUITY</b>		<b>40,473,763</b>	<b>39,134,747</b>	<b>7,147,596</b>	<b>6,490,489</b>

These financial statements were authorised for issue by the board on 10 November 2009.



Chairman



Board Representative

These financial statements must be read in conjunction with the accompanying notes

# Notes to and Forming Part of the Financial Statements

FOR THE YEAR ENDED 30 JUNE 2009

## 1 STATEMENT OF ACCOUNTING POLICIES

### Reporting Entity

Ngāti Kahungunu Iwi Incorporated (the society) is an incorporated society established in 1988 under the Incorporated Societies Act 1908.

Ngāti Kahungunu Iwi Incorporated has several subsidiary entities.

The reporting entity comprises the society and consolidated group of the society and its subsidiaries. The financial statements are prepared under generally accepted accounting principles.

### Measurement Base

The accounting principles recognised as appropriate for the measurement and reporting of earnings and financial position on an historical cost basis are followed.

### Differential Reporting

The society qualifies for differential reporting as it is not publicly accountable, and not large in size. The society has taken advantage of all available differential reporting exemptions except for FRS 19 GST

### Specific Accounting Policies

The specific accounting policies which materially affect the measurement of financial performance and financial position have been applied.

#### (a) Consolidation

The purchase method of consolidation has been applied in preparing the consolidated financial statements. All inter entity transactions and balances have been eliminated on consolidation.

#### (b) Operating Revenue

This represents revenue earned from the sale of the society's products and services, investment income on the society's investments, and income earned on contract for services net of any credit allowed. Project related income is recorded on an accruals basis, consistent with the degree of project completion.

#### (c) Depreciation

Depreciation has been calculated using rates permitted by the Income Tax Act 2004

Vehicles	20-32% DV
Buildings	2% SL
Computer Equipment & Plant	10-50% DV

#### (d) Income Tax

The society is registered as a charitable entity under the Charities Act 2005 so qualifies for an income tax exemption under the Income Tax Act 2004.

#### (e) Fixed Assets

Fixed assets are stated at cost less accumulated depreciation.

# Notes to and Forming Part of the Financial Statements

FOR THE YEAR ENDED 30 JUNE 2009

**(f) Investments and Advances**

Investments and Advances are recorded at cost or estimated net realisable value if there has been a permanent diminution in value.

**(g) Quota and Shares**

The shares in Aotearoa Fisheries Limited and quota received under the Fisheries Asset Settlement process have been included at the value established by Te Ohu Kaimoana on transfer. Market acquisitions of shares or quota are recorded at cost and adjusted for impairment where necessary.

**(h) Inventory**

Inventories are valued at the lower of cost and net realisable value.

**(i) Debtors**

Debtors are stated at their estimated net realisable value.

**(j) Taiwhenua/Taurahere distribution**

Taiwhenua/Taurahere distributions are recorded as a movement in equity.

**Changes in Accounting Policies**

There have been no changes in the accounting policies during the year. All policies have been consistently applied.

	Consolidated		Parent	
2 INCOME	2009	2008	2009	2008
	\$	\$	\$	\$
Income includes				
Dividends	91,431	-	1,400,000	1,400,000
Interest Income	306,526	405,655	64,732	110,876
Gain on Sale of Properties	804,204	-	804,204	-
Lotteries Grant	5,000	50,985	5,000	50,985
Rental Income	17,318	9,100	17,318	9,100
Takitimu Festival Income	335,209	29,418	335,209	29,418
<b>3 EXPENSES</b>				
Expenses include				
Depreciation	54,039	25,450	53,684	25,396
Bad and doubtful debts	-	333	-	333
Audit fees	23,548	21,820	16,040	14,620
Board member honoraria/ committee fees	185,367	207,289	132,86	154,789
Donations	94,000	-	94,000	-
Loss on sale of assets	1,743	7,627	1,743	7,627
Rent	14,148	-	14,148	-
Takitimu Festival Expense	656,102	29,419	656,102	29,419

**4 TAIWHENUA /TAURAHERE GRANTS PAYABLE**

The board requires certain criteria to be met prior to payments of grants. The expectation is that each Taiwhenua and Taurahere can fulfil the criteria.

# Notes to and Forming Part of the Financial Statements

FOR THE YEAR ENDED 30 JUNE 2009

5 EQUITY	Consolidated		Parent	
	2009 \$	2008 \$	2009 \$	2008 \$
Opening Balance - Retained earnings	3,879,537	3,226,489	2,478,999	2,870,370
Net Surplus for the year	1,255,668	1,597,167	625,295	552,748
Less: Taiwhenua Distribution	-	(792,830)	-	(792,830)
Less: Transfer to Reserve Fund	(152,135)	(151,289)	(152,135)	(151,289)
Closing balance Retained earnings	<u>4,983,070</u>	<u>3,879,537</u>	<u>2,952,159</u>	<u>2,478,999</u>
Opening Balance Reserve Fund	893,978	742,689	893,978	742,689
Add: Transfer from Retained earnings	152,135	151,289	152,135	151,289
Closing Balance Reserve Fund	<u>1,046,113</u>	<u>893,978</u>	<u>1,046,113</u>	<u>893,978</u>
Opening Balance Fisheries Settlement Assets	31,139,951	31,139,951	-	-
Add: Fisheries Settlement Assets Distribution	-	-	-	-
Closing Balance Fisheries Settlement Assets	<u>31,139,951</u>	<u>31,139,951</u>	-	-
Total equity	<u>37,169,134</u>	<u>35,913,466</u>	<u>3,998,272</u>	<u>3,372,977</u>

For prudential purposes the board of Ngāti Kahungunu Iwi Incorporated has resolved to set aside an amount of annual income each year as an enduring capital base for the Society.

6 PROPERTY	Original Cost	Accum Dpn	Closing Value
<b>Parent &amp; consolidated</b>			
Land & Buildings 2009	-	-	-
Land & Buildings 2008	351,234	52,535	298,699

In 2009 the properties on Orchard & Kirkwood Roads sold for a total of \$1,138,889. \$1,000,000 of this was transferred to the Kahungunu Asset Holding Company and will be invested as share capital. \$94,000 was donated to the Little Elms project. The balance contributed to the relocation of the office premises.

## 7 MOTOR VEHICLES & PLANT

### Parent 2009

Vehicles	195,986	129,883	66,103
Plant & Machinery	154,338	90,461	63,877
	<u>350,324</u>	<u>220,344</u>	<u>129,980</u>

### Consolidated 2009

Vehicles	195,986	129,883	66,103
Plant & Machinery	158,594	90,871	67,723
	<u>354,580</u>	<u>220,754</u>	<u>133,826</u>

### Parent 2008

Vehicles	201,764	105,341	96,423
Plant & Machinery	131,087	86,671	44,416
	<u>332,851</u>	<u>192,012</u>	<u>140,839</u>

### Consolidated 2008

Vehicles	201,764	105,341	96,423
Plant & Machinery	132,566	86,725	45,841
	<u>332,851</u>	<u>192,012</u>	<u>140,839</u>

# Notes to and Forming Part of the Financial Statements

FOR THE YEAR ENDED 30 JUNE 2009

## 8 QUOTA

In 2007 the Kahungunu Asset Holding Company received quota as part of the Fisheries Settlement. Under the Māori Fisheries Act 2004, the company must not sell its settlement quota until two years after transfer from Te Ohu Kaimoana. After two years, the company can only sell its settlement quota to another iwi or to a member of the Te Ohu Kaimoana group. The quota has been recorded at the value placed on it for settlement purposes.

Subsequent to the 2007 settlement, further quota has been purchased and is recorded at cost.

9 INVESTMENTS	Consolidated		Parent	
	2009	2008	2009	2008
	\$	\$	\$	\$
<b>Investments in Subsidiaries</b>				
Shares Tronk (100%)	-	-	15,732	15,732
Shares Kahungunu				
Asset Holding Company (100%)	-	-	1,200,000	1,200,000
	-	-	1,215,732	1,215,732
<b>Shares in other companies</b>				
Aotearoa Fisheries Ltd	19,874,735	19,874,735	-	-
Fiordland Lobster Company	953,850	720,000	-	-
Napier Mussels Ltd (40%)	-	80,000	-	80,000
Less: Provision	-	(80,000)	-	(80,000)
	20,828,585	20,594,735	-	-
<b>Advances</b>				
Tamatea Taiwhenua	18,485	21,152	18,485	21,152
Napier Mussels Ltd	195,592	195,592	195,592	195,592
Less: Provision	(195,592)	(195,592)	(195,592)	(195,592)
	18,485	21,152	18,485	21,152
<b>Amount due from/(to) Subsidiaries</b>				
Tu Kahu Ltd	-	-	-	-
TRONK	-	-	(15,732)	(15,732)
	-	-	(15,732)	(15,732)
	20,847,070	20,615,887	1,218,485	1,221,152
<b>Amount due from/(to) Current Subsidiaries</b>				
Kahungunu Asset				
Holding Company	-	-	1,000,000	-
	-	-	1,000,000	1,189,688

The Kahungunu Asset Holding Company has received, as part of the Fisheries Settlement, 7,874 shares in Aotearoa Fisheries Ltd (AFL). This represents a 6.3% holding in that company. The shares have been recorded at the value established by Te Ohu Kaimoana on transfer. The net book value of the Kahungunu Asset Holding Company's shareholding in AFL as disclosed in its Annual Report at 30 September 2008 was \$20,043,676 (2007: \$19,359,459). Under the Māori Fisheries Act 2004, the company must not sell its AFL shares until two years after transfer from Te Ohu Kaimoana. After two years, the company can only sell its AFL shares to another iwi or to a member of the Te Ohu Kaimoana group.



# Notes to and Forming Part of the Financial Statements

FOR THE YEAR ENDED 30 JUNE 2009

The Kahungunu Asset Holding Company has purchased 111,590 (2008: 100,000) shares in Fiordland Lobster Company (FLC). This represents a 5.0% (2008: 4.5%) holding in that company. These shares have been included at cost. The net book of the Kahungunu Asset Holding Company's share holding in FLC as disclosed in its Annual Report at 31 March 2009 was \$1,788,061 (2008: \$1,136,064).

The shares in Napier Mussels Limited have been transferred to Kahungunu Asset Holding Company during 2009 at nil cost. The fully provisioned advance to NML remains in the parent company.

	Consolidated		Parent	
	2009	2008	2009	2008
	\$	\$	\$	\$
<b>10 BANK ACCOUNTS</b>				
Petty Cash	100	48	100	48
Cheque Account	106,568	494,133	(30,952)	490,124
Call Account	208,227	139,965	68,772	1,694
Term Deposits	8,858,638	7,543,274	4,315,025	3,960,723
	<u>9,173,533</u>	<u>8,177,420</u>	<u>4,352,945</u>	<u>4,452,589</u>

Deposits totalling \$2,506,253 (2008 \$1,843,043) arise from fishing receipts and are being held in trust subject to resolution of disputes regarding allocation.

## 11 STOCKS ON HAND

Merchandise	2,000	7,268	2,000	7,268
	<u>2,000</u>	<u>7,268</u>	<u>2,000</u>	<u>7,268</u>

## 12 MOTOR VEHICLE FINANCES

Total instalments outstanding	16,650	33,300	16,650	33,300
	<u>16,650</u>	<u>33,300</u>	<u>16,650</u>	<u>33,300</u>
Payable within 1 year	16,650	16,650	16,650	16,650
1-2 years	-	16,650	-	16,650
2-5 years	-	-	-	-
	<u>16,650</u>	<u>33,300</u>	<u>16,650</u>	<u>33,300</u>

## 13 PROVISIONS

The provision is an amount of \$2,506,253 set aside to settle the dispute with the Rongomaiwahine Iwi Trust in accordance with the deed of settlement signed 21 July 2006. The exact amount of the settlement is not known as the dispute is still to be settled.

## 14 RELATED PARTY TRANSACTIONS

The society enters into transactions with and on behalf of its subsidiaries Te Runanganui O Ngati Kahungunu Ltd, and the Kahungunu Asset Holding Company

The society collects and distributes funds on behalf of and to constituent Taiwhenua and Taurahere organisations.

There are common board members between the society and the Taiwhenua and Taurahere organisations.

# Notes to and Forming Part of the Financial Statements

FOR THE YEAR ENDED 30 JUNE 2009

During the year the Kahungunu Asset Holding Company paid a dividend of \$1,400,000 to the society.

The society paid fees to the directors during the year. The value of these are shown in note 3.

There were no amounts outstanding at balance date relating to these transactions.

The Kahungunu Asset Holding Company paid consultancy fees to Chris O'Reilly Consultancy Limited in which Mr C. O'Reilly a director, has an interest, to Brierley Business Development Ltd in which Mr P Brierley, a director, has an interest and to Mrs C Teariki. These were paid at normal commercial rates, and there were no amounts outstanding at balance date.

H Mikaere is a director of both the Kahungunu Asset Holding Company and Aotearoa Fisheries Ltd. A Ropiha is the General Manager of the Kahungunu Asset Holding Company and a director of Fiordland Lobster Company Ltd.

## 15 SUBSEQUENT EVENTS

After balance date the society agreed to purchase a double hulled waka for \$500,000 with settlement no later than 1 January 2011. As at balance date, the society had advanced \$1,000,000 to the Kahungunu Asset Holding Company. It is intended this will transfer to share equity after balance date.

Ngāti Kahungunu Iwi Incorporated has reached a settlement with Rangitane which resulted in the transfer of 501m quota shares valued at \$16.9m (plus \$0.3m in cash) from Te Ohu Kai Moana to Kahungunu Asset Holding Company Limited. Of this, the CRA3 quota is transferable to Rongomaiwahine Iwi Trust as part of an agreed settlement.

Kahungunu Asset Holding Company issued a further 1 million shares to its shareholder, Ngāti Kahungunu Iwi Incorporated.

The quota and cash settlement was transferred to the Kahungunu Asset Holding Company on 30 July 2009.

In 2008 a property situated on Kirkwood Road, Flaxmere, was sold for \$280,000. There have been no other events subsequent to balance date that have an effect on these financial statements.

## 16 COMMITMENTS AND CONTINGENT LIABILITIES

The society has an agreement to lease premises from Lowe Corporation for \$56,593 per annum. The lease is for three years with an option to renew after that date.

A contract to purchase a motor vehicle for \$39,918 has been committed to in September 2009 with repayments for three years.

The board has made a commitment to put \$1,000,000 cash and kind towards the Kahungunu Cultural Centre.

In 2008 the society had underwritten the Takitimu Festival to a maximum of \$500,000.

# Audit Report



## To the Members of Ngāti Kahungunu Iwi Incorporated

We have audited the financial report on pages 17 to 24. The financial report provides information about the past financial performance and financial position of Ngāti Kahungunu Iwi Incorporated (the society) and group as at 30 June 2009. This information is stated in accordance with the accounting policies set out on pages 19 and 20.

### Board's Responsibilities

The Board is responsible for the preparation, in accordance with New Zealand law and generally accepted accounting practice, of a financial report which fairly reflects the financial position of the society and group as at 30 June 2009 and of the results of operations for the year ended 30 June 2009.

### Auditors' Responsibilities

It is our responsibility to express an independent opinion on the financial report presented by the Board and report our opinion to you.

### Basis of Opinion

An audit includes examining on a test basis, evidence relevant to the amounts and disclosures in the financial report. It also includes assessing:

- the significant estimates and judgements made by the Board in the preparation of the financial report, and
- whether the accounting policies are appropriate to the society and group circumstances, consistently applied and adequately disclosed.

We conducted our audit in accordance with generally accepted auditing standards in New Zealand. We planned and performed our audit so as to obtain all the information and explanations which we considered necessary. We obtained sufficient evidence to give reasonable assurance that the financial report is free from material misstatements, whether caused by fraud or error. In forming our opinion we also evaluated the overall adequacy of the presentation of information in the financial report.

Other than in our capacity as auditors we have no other relationship with or interests in the society or its subsidiary companies.

### Unqualified Opinion

We have obtained all the information and explanations that we have required.

In our opinion, the financial report on pages 17 to 24 fairly reflects the financial position of the society and group as at 30 June 2009 and the results of operations for the year ended on that date.

Our audit was completed on 10 November 2009 and our unqualified opinion is expressed as at that date.

A handwritten signature in dark ink, appearing to read 'Staples Rodway', written over a light blue background.

Chartered Accountants  
Hastings, New Zealand



Ngāti Kahungunu Iwi  
INCORPORATED

# Annual Plan 2009-2010

## Vision & Mission

The vision and mission statements have been defined by Ngāti Kahungunu Iwi Incorporated as follows:

### **Vision statement**

“Kahungunu - Ki Te Whaiao, Ki Te Ao Marama”  
Achieving excellence in all areas of our lives

### **Mission statement**

Kia maumahara ki te mana ahua ake o Ngāti Kahungunu  
Uphold the absolute uniqueness of the living breath of Kahungunu  
“To enhance the mana and well-being of Ngāti Kahungunu Iwi”

This Annual Plan details the objectives that Ngāti Kahungunu Iwi Incorporated will focus on for July 2009 to June 2010. The objectives and tasks are specific, achievable and time bound. The next twelve months will require quality resources that are targeted at achieving our objectives. Many of the objectives and tasks have a project focus that is part of a continuum of our development.

Government contracting opportunities have been maximised to support the realisation of our annual and strategic objectives and goals. In particular, opportunities that support our cultural, whānau, capability and capacity development objectives have been or are being negotiated with the Ministry of Education and Te Puni Kokiri.

# Tino Rangatiratanga

## Political advocacy including manage the macro claim issues, multiplying the value of tribal assets.

### Develop a strong National and International policy and advocacy profile.

Develop position statements on matters of importance to Ngāti Kahungunu, to indigenous peoples worldwide, to the regions that the Iwi rohe encompass and to the Nation. This includes the Foreshore and Seabed, Family Violence, Freshwater, fisheries, Language and Culture and Youth Development. Monitor crown and agency performance in support of cultural, social, & environmental development.

### Achieved when:

- 10 media position statements are completed by 30 June 2010.
- Key issues are reported to whānau and hapū on a quarterly basis.
- The Board identifies 5 priorities and sign off on advocacy plan by 30 July 2009.
- Build youth advocacy through Taiao Taiohi wānanga to promote eco-warrior skills and tools to up to 8 rangatahi by 31 July 2009. Evaluations show that outcomes sought were achieved.
- Tool to collect and analyze information on issues of critical importance and interest to Ngāti Kahungunu whānau and hapū is developed by 30 December 2009.
- Tool piloted with reporting from two agencies by 30 June 2010.

### Build hapū and iwi capability and capacity.

Agree and implement the multi-year fisheries management plan.

### Achieved when:

- A Fisheries Management Unit is established by 30 June 2010.

### Monitor the protection and growth of the Iwi assets through the KAHC.

Monitor, critique and set targets and clear expectations for company performance and investment priorities.

### Achieved when:

- The Kahungunu Asset Holding Company reports to the Board and reports meet shareholder targets.

## Build and maintain intra, inter-iwi and other relationships.

### Develop strategic alliances and relationships to support the development of Ngāti Kahungunu Iwi Incorporated.

Develop a Ngāti Kahungunu levels of engagement operational plan to support research and iwi development objectives.

### Achieved when:

- A clear operational plan is prepared by 30 December 2009.
- Relationships provide for strategic and operational opportunities for Ngāti Kahungunu whānau, hapū and iwi.

### Promote Ngāti Kahungunu in national and international events.

Iwi involvement in the RWC2011. Support the New Zealand Māori Golf Tournament 2010 in collaboration with Kahungunu Māori Golf Association. Support and host Te Matau a Māui Annual Māori Fisheries Conference 2010.

### Achieved when:

- Events are achieved within budget and according to project performance standards.

# Kahungunutanga

## Safeguarding the mana of Kahungunutanga, championing cultural excellence.

Increase Ngāti Kahungunu research capacity and capability.

Develop, refine and promote: Ngāti Kahungunu research models, methodologies, frameworks, standards, protocols, guidelines, toolkits, publications, policies, positions, measurement, indicators.

Achieved when:

- A scoping report on the establishment of the Ngāti Kahungunu Research and Development Centre, Leadership team and ethics committee is developed by 30 Dec 2009.
- The Māori Battalion D company research and development is promoted by 30 June 2010.
- Project plan and funding proposal to measure progress against NK2026 by 30 June 2010.
- A Budget (2010-15) is secured by 30 June 2010.

Develop and strengthen the organizational capability of Ngāti Kahungunu Iwi Incorporated. Office.

Development of a three year Statement of Intent that includes a growth strategy and prioritizes professional development complete by 30 June 2010.

Complete a strategic and systems review of Ngāti Kahungunu Iwi Incorporated capability and capacity.

Achieved when:

- A three year Statement of Intent is completed by 30 June 2010.
- A strategic and systems review of the Ngāti Kahungunu Iwi Incorporated. capability and capacity is completed by 30 December 2009.

Growing and showcasing leadership for cultural excellence.

Develop a multi-year plan to contribute to the cultural expectations and aspirations of Ngāti Kahungunu hapū and whānau by 30 June 2010.

Achieved when:

- The plan engages Ngāti Kahungunu Taumata, Kaumātua, rangatahi, schools, and highlights key cultural events.
- The plan includes options for progressing the Ngāti Kahungunu cultural centre and waka hourua objectives.

# Whanaungatanga

## Harnessing the strength that lies in unity maintaining a tribal register, driving tribal-wide communication.

Realise Ngāti Kahungunu cultural and whanaungatanga goals.

Develop events and activities that will promote and cultivate positive opportunities to develop unity, strengthen whanaungatanga and build iwi pride.

Offer support and assistance to other events held in Kahungunu by iwi members.

Achieved when:

- All events are managed within targets and budget.
- A Calendar of funded events is approved by the Board and promoted to the iwi members.

# Whanaungatanga

To strengthen accountability to iwi members and improve communication with whānau, hapū, marae and iwi.

Monitor and achieve quality performance.

Manage financial and reputational risk.

Identify (develop and maintain) strategic relationships.

Increase iwi registration.

Conduct open hui a marama (Board meetings).

Present strategic and annual plans, annual reports and audited financial statements to Hui a Iwi.

Run the promotions campaign and facilitate the process for the Ngāti Kahungunu Board Elections April 2010.

**Achieved when:**

- Management reporting to the board incorporates quality outcomes, risk and opportunity and provides a levels of engagement report on relationships.
- The annual review of the Board and board member performance is completed by 30 June 2010.
- Open hui a marama are held at least each quarter.
- Accountability to Iwi AGM November 2009.
- A promotions campaign and Board elections process is managed within targets and budget.
- Membership is advised of Board Elections outcomes.

Promoting and supporting strong healthy and vibrant whānau.

Maintain and grow the network of providers.

Work with providers to promote and support strong, healthy and vibrant whānau initiatives.

**Achieved when:**

- Collaborative working relationships are established and maintained with providers.

Provide charitable objects to the benefit of members.

Procure and administer Pātaka.

Publicise and promote Ngāti Kahungunu Iwi Incorporated scholarships.

Develop scholarship policy according to Ngāti Kahungunu research priorities.

Plan, manage and lead the sponsorship process for whānau/hapū and iwi groups to encourage and recognize the pursuit of cultural and sporting excellence.

Review current and potential future benefits for members.

**Achieved when:**

- Pātaka reporting is accurate and provides policy options when required.
- Scholarships/sponsorships are publicized in line with policies and applications continue to increase.
- A report on potential new benefits for members is presented by the 30 June 2010.

The Registrations, Contact and Nomination Databases are maintained, increased and enhanced.

Maintain and update the iwi registration database.

Maintain and update the Contacts and Skills Databases.

Review Ngāti Kahungunu Iwi Incorporated databases to improve performance.

**Achieved when:**

- Iwi registrations are increased by 10% per year.
- The Contacts and Skills Databases is increased by 10% per year.
- Ngāti Kahungunu Iwi Incorporated databases are reviewed to improve performance.



**Ngāti Kahungunu Iwi**  
INCORPORATED

304 FITZROY AVENUE, PO BOX 2406, HASTINGS 4153, NEW ZEALAND  
PHONE 06 876 2718 • FAX 06 876 4807 • TOLL FREE 0800 KAHUNGUNU (0800 524 864)  
EMAIL: [paatai@kahungunu.iwi.nz](mailto:paatai@kahungunu.iwi.nz)  
WEB: [www.kahungunu.iwi.nz](http://www.kahungunu.iwi.nz)

New Zealand  
Permit No. 167697



# AGM 28 NOVEMBER

## 10AM SPLASH PLANET, HASTINGS