

Hoea rā



Ngāti Kahungunu Iwi
INCORPORATED

Annual Report 2015 - 2016

Published November 2016

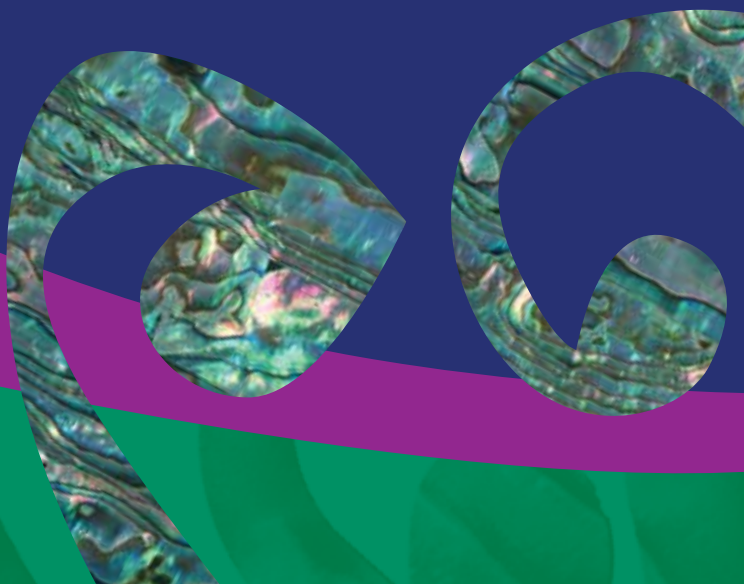


Table of Contents

| | Page |
|--|------|
| Purpose, Vision & Mission | 1 |
| Chairperson's Report | 2 |
| Chief Executive's Statement | 4 |
| Our Year at a Glance | 5 |
| 2016 Election Outcome | 6 |
| Board Members 2016-2019 | 7 |
| Staff Members 2015-2016 | 9 |
| Ngāti Kahungunu Iwi Incorporated Organisation Structure | 10 |
| Te Reo, Tikanga & Mātauranga | 11 |
| Environment & Natural Resources | 13 |
| Benefits to Members | 16 |
| Kahungunu Asset Holding Company Ltd Chairman's Report | 25 |
| Kahungunu Asset Holding Company Ltd Directors | 30 |
| Ngāti Kahungunu Iwi Incorporated Summary Financial Statements | 32 |
| Annual Plan 2016-2017 | 35 |
| AGM Agenda | 39 |



Fiordland Lobster Company & Kahungunu Asset Holding Company
Factory Opening 15 April 2016

Purpose, Vision & Mission

Ngāti Kahungunu Iwi Incorporated, with the mandate to represent the people of Ngāti Kahungunu, is the governing body for all aspects of Ngāti Kahungunu Iwi development.

The purpose of Ngāti Kahungunu Iwi Incorporated is to:

- Promote or assist the education of Ngāti Kahungunu Iwi;
- Promote the custody and preservation of the beliefs, customs and language of Ngāti Kahungunu Iwi;
- Promote the social and economic welfare advancement and vocational training of Ngāti Kahungunu Iwi;
- Promote personal, whānau and community health and wellbeing and raise the living standards of Ngāti Kahungunu Iwi;
- Promote high quality communications to and for the benefit of the members of Ngāti Kahungunu Iwi.

Strategic Objectives

In September 2001 consultation with whānau throughout the rohe of Kahungunu occurred. Whānau shared their views, aspirations and desires which helped shape the development of a vision to guide Ngāti Kahungunu into the future. The vision, known as Kahungunu 2026, outlines the vision and mission statements and seven identified strategic objectives to focus on. The Ngāti Kahungunu Iwi Inc. planning framework continues to outline priorities, activities and desired outcomes that link directly to the seven strategic objectives within the Kahungunu 2026 vision.

The seven strategic objectives are:

- Ngāti Kahungunu - Culturally Strong;
- Ngāti Kahungunu - Healthy and Vibrant Whānau;
- Ngāti Kahungunu - Economically Strong;
- Ngāti Kahungunu - Informed and Participating Citizens in the World;
- Ngāti Kahungunu - Independent and Self Determined;
- Ngāti Kahungunu - Healthy, Thriving and Sustainable Environment
- Ngāti Kahungunu - Making our Mark

Vision Statement

"Kahungunu - ki te whaiao, ki te ao mārama"

Achieving excellence in all areas of our lives

Mission Statement

Kia maumahara ki te mana āhua ake o Ngāti Kahungunu

Uphold the absolute uniqueness of the living breath of Kahungunu

"To enhance the mana and well-being of Ngāti Kahungunu Iwi"

Reporting

Ngāti Kahungunu Iwi Incorporated has an obligation to provide an 'Annual Report' for its membership to account for the previous financial year 1 July 2015 – 30 June 2016. This document provides a summary report against the objectives set out in the 2015-2016 Annual Plan. It includes steps taken to increase the registration database and gives an overview of the organisation's performance, including changes in the value of its assets, profit distribution and the summary financial statements.

Chairperson's Report



*E ngā hoa kua takangaro ki te ringa kaha o aituā,
Moe mai, e okioki i ngā mātua tīpuna,
E te hunga ora, ngā tukemata nui o Kahungunu,
Haria te mere me te taiaha o ō tātau tīpuna hai hiki i
te mauri, te mana, te ihi o to tātau iwi, o Ngāti Kahungunu!*

Ruiruia ngā kākano! Fresh from the latest iwi board election I greet you as the new old chairman. We welcome two new board members Marama Tuuta from Wairarapa and Hori Reti from Tangoio and we farewell our old campaigners Nelson Rangī from Wairarapa and Karauna Brown from Te Whanganui-a-Orotū. Our new iwi board consists of something old, something new, and it's the new that we want to enhance and concentrate on.

Kahungunu, kia eke! The plans for Te Matatini are well advanced and definite. Te Matatini will showcase Kahungunu as no other event has and we will be hanging out the best of Kahungunu for the rest of the world to see. The organisation continues to promote Te Reo at the highest levels. A Kahungunu Te Reo Symposium, Kahungunu Kura Reo, National Te Ataarangi Hui Whanui, National Te Reo Awards and the National Secondary School kapa haka competitions are some of the events the iwi have hosted. Although the advancement on the reo is slow, even to the point of becoming stagnant, we propose to promote the reo stronger in the coming year. I acknowledge the work done by our Te Reo unit and the assistance from our iwi whānau.

Kaitiaki ki te kaiarataki! We have reported in the past the inordinate amount of resources needed to protect Papatuanuku, our waterways and the mauri of our aquifers from over development and pollution to the point of depletion and persistent pollution. We have worked closely in the local body elections with candidates that support our values and we believe we have influenced local and regional elections that will have positive impacts on our environment and ecology. I acknowledge the work done by our environment team, kaitiaki, advocates and allies from across sectors.

Mauri tū, mauri ora! The tari has been extending its support to hapū claimant groups that have settled and those that are yet to settle, and now



Ngāti Kahungunu iwi Staff with Chair Ngāhiwi & wife Mere Tomoana, and our Kaumātua Haami and Auntie Edina Hilton.

Chairperson's Report

there is a growing traction of combining resources, effort and strategy in order to achieve best results politically, environmentally, socially and economically. One example is Te Kāhui Ōhanga o Takitimu, a group formed to develop Mātariki – an economic regional strategy that was developed by all those mentioned above, and now has been adopted as a regional growth strategy and been recognised nationally. There is a similar drive in the environmental development area, also among those named above, which augurs well for kotahitanga yet preserving rangatiratanga of each organisation.

Ko te whānau te papa! Whānau is the basis of strong hapū and robust iwi and its in this area that we have spent a bit more energy in bringing more prominence to whānau development through education, health, social and economic development. Until we reach this goal the major force of iwi will be dependent on government hence our kaupapa is to create independent whānau who are well educated, well housed, and healthy. This has been a long fuse which has meant changing the leopard spots of government departments to genuinely address the needs of whānau and not just play lip service or have statistical regard for our whānau. This will require greater effort and greater empathy at whānau level but the whānau events have given greater confidence and respect for iwi strategies which demonstrated itself in the latest local body elections with whānau voting with their feet to the ballot boxes for major political shifts. It is the biggest shift I've seen in my political career and we are still coming to terms with this shift. Whānau is the key to successful iwi and we as an organisation must find the key to successful whānau.

Mā te huruhuru te manu, ka rere! The Kahungunu Asset Holding Company (KAHC) continues to go from strength to strength even in its modest portrayal to the iwi but this year they invested in a property in Auckland which is now the largest single Crayfish plant in the country leveraged off our quota base and our relationships with mainly pakeha quota holders and fishermen. The Tautane station continues to do well with its partnership with Taratahi and this has led to many options and offers placed before the KAHC. It also demonstrates leadership not just to claimant groups but to other iwi around the country who are looking for similar modeling. It's with pleasure that we also announce and welcome two new directors to the KAHC Board, Pania Tyson-Nathan and Heather Te Au-Skipworth. We also acknowledge Mike Paku for KAHC as he departs to take up the role of Chair of the NKil Finance, Risk and audit committee.

Our tari has continued to operate despite the surges and swells of the demands placed on us and if there's a saying that exemplifies the performance of the tari, 'pērā i te wheke', with eight tentacles we reach into every corner of iwi kaupapa and do it with a smile. To the army of volunteers and whānau who have supported throughout the year, 'Me i kore ake tā koutou tautoko, kua kore e tutuki ō mātau tūmanako.' – 'Without your support, we would not have achieved our ambitions'.

Tihe Kahungunu, ki te whaiao, ki te ao mārama



Ngahiwi Tomoana
Chairman

Chief Executive's Statement



*Ngāti Kahungunu iwi,
Ngāti Kahungunu mana,
Ngāti Kahungunu tapu,
Ngāti Kahungunu ihi,
Tēnā rā koutou katoa!*

He waka eke noa

Ngāti Kahungunu has just experienced a major shift in the political environment in which we operate. This shift is as a result of the local body elections and subsequent influence that Kahungunu leaders, and others that share common values with the Iwi, will bring into key positions. This result follows a year in which Kahungunu leadership, relationships and courage have come to the fore, with a number of initiatives being led or supported by Ngāti Kahungunu Iwi at a local and national level including:

- Te Kotahitanga Tiaki Taiao – A collective of local Kahungunu environmental practitioners who are contributing to:
 - TANK collaborative process
- Te Kāhui Ōhanga o Takitimu – A collective of Kahungunu claimant groups, taiwhenua and iwi with a focus on “economic development” (in the broadest sense of the word) who are contributing to and delivering components of:
 - Matariki – Hawke’s Bay Regional Economic Development Strategy
 - Social inclusion strategy (in development)
 - He kai kei aku ringa – The Crown-Māori Economic growth partnership
- LIFT Hawke’s Bay, Kia Tapatahi – CE and Chairs of local government, Crown Agencies (e.g. Ministry of Education, Ministry for Social Development) and Iwi (including claimant groups) working together to align work across our organisations, working in partnership to build a better region for all.
- Iwi Chairs Forum – This forum meets quarterly to discuss, share information and resources on a wide range of issues affecting Māoridom. Ngāti Kahungunu are members of Iwi technical teams working together with the Crown on:
 - Iwi Rights and Interests in Freshwater and;
 - To mitigate any risks and maximise any benefits arising from the Trans-Pacific Partnership Agreement or other such agreements.

Although specific focus between organisations may vary, we have many goals and aspirations in common. I believe that as we unite our efforts and unique set of skills, we can work together on our common goals, and make a huge difference.

Nāu te rourou, nāku te rourou ka ora te iwi

- I would like to give a huge vote of thanks and mihi to the Directors and staff of our Iwi tari who have had another very busy and productive year. Reading the updates in this report, it is amazing to reflect on what our small but mighty team has achieved. We’ve delivered on our annual plan (and some) all within our budget. In fact, we managed to come in under budget and as such we did not have to draw on all of our reserve funds as anticipated. This is a fantastic result and I congratulate everyone for their contributions in terms of bringing in additional external income and continuing to look for ways to ensure our dollars stretch as far as possible.
- During 2015-16 we welcomed Irihāpeti Roberts into the Te Reo Directorate to contribute to a fixed-term research project on the unique

Chief Executive's Statement

dialect of Kahungunu. We also welcomed back Danielle Keil who has joined the team to coordinate our Kahungunu Allied events that will take place in February 2017 during Te Matatini. We farewelled Jenny Smith, Dr James Graham and Hamahona Ambler, and more recently Naina Watene who have left the tari to pursue other opportunities. I acknowledge each of them for their hard work given over the years. Hamahona Ambler re-joined the tari as the Project Manager for Te Kāhui Ōhanga o Takitimu, a shared resource to all Kāhui partners to advance our shared aspirations.

- I feel privileged to lead such a small, passionate, talented and dedicated team and we are fortunate to be supported in our mahi by an innovative Chairman and Board. Our new Board has been elected by our people and as such keep us grounded and constantly challenge us to deliver the best for our members. Together we bring our diverse skills and talents to our mahi and punch well above our weight in terms of delivery of benefits to our iwi members. Ehara taku toa i te toa takitahi, engari taku toa he toa takitini kē.
- I would also like to acknowledge the Kahungunu Asset Holding Company that have also had a great year, increasing their equity from \$61,567,929 to \$69,540,526. Congratulations to Rangi Manuel and the team.

And last but not least, I'd like to wish our whānau members of Ngāti Kahungunu Iwi wherever you are in the world, a safe and enjoyable festive season.



Dr Adele Whyte
Kaiwhakahaere Matua/Chief Executive

Our Year at a Glance

11 major NKII events were held during the 2015/2016 year

78 groups & individuals received sponsorship funding

86 tertiary students received scholarship funding

92 boxes of fish were given to whānau for tangihanga tautoko

120 iwi members attended the 6th Kahungunu Fish Hook Summit

132 iwi members attended the Kahungunu Kura Reo 2015

405 iwi members attended the Te Reo Symposium 2016

560 iwi members performed in the Kahungunu Regional Kapa Haka competition 2016

1,015 new members registered with the iwi

1,512 iwi members participated in 6 sporting codes at the 10th AGM Pa Sports 2015

2,311 iwi members voted in the 2016 Board Elections

3,500 iwi members attended the 10th AGM at Splash Planet

32,000 people attended 11 iwi events

2016 Election Outcome



Old and new board members from top left to right: Bill Blake (Kaumātua), Hori Reti, Karauna Brown, Hayden Hape, Haami Hilton (Kaumātua), Mike Paku, JB Smith, Bernie Kane, Owen Purcell. Bottom row: Te Riria Proctor, Rill Meihana, Noelene Smiler, Ngahiwi Tomoana, Nelson Rangī, Marama Tuuta, Alice Wairau.

The outcome of the 2016 Ngāti Kahungunu Iwi Incorporated Board Election was declared at a Special General Meeting held at Ngāti Kahungunu Iwi Incorporated 304 Fitzroy Avenue on Friday 29 April 2016.

We acknowledge all of the 21 candidates who put their names forward for this election and congratulate those who were successful in being elected.

| Area | Candidates Name |
|-------------------------------------|--|
| Ngāti Kahungunu Wairoa Taiwhenua | Board member - Rill Meihana Alternate - Alice Wairau |
| Te Taiwhenua o Heretaunga | Board member - Mike Paku Alternate - Hopaea Walker |
| Te Whanganui-a-Orotū | Board member - George Reti Alternate - Karauna Brown |
| Te Taiwhenua o Tamatea | Board member - JB Heperi-Smith Alternate - Jenny Smith |
| Kahungunu ki Wairarapa | Board member - Marama Amiria Tuuta Alternate - Nelson Rangī |
| Taurahere Rūnanga | Board member - Noelene Mauritania Smiler Board member - Owen Purcell Alternate - Te Riria (Lydia) Christine Proctor Alternate - Bernie Kane |
| Kahungunu ki Tāmaki-nui-a-Rua | Board member - Hayden Hape |
| Chairman | Board member - Ngahiwi Tomoana |
| Kaumātua | Board member - Haami Te Kuru Hilton |

All Election Information: www.kahungunu.iwi.nz

Board Members 2016-2019



Haami Hilton

Kaumātua Representative

Ko Kahurānaki te maunga
Ko Ngaruroro te awa
Ko Poukawa te waiū
Ko Kahurānaki te marae
Ko Te Rangikoianake te hapū
Ko Te Whatuiapiti te tangata
Ko Te Hāpuku te rangatira
Ko Tākitimu te waka
Ko Ngāti Kahungunu te iwi
Ko Haami Te Kuru Hilton tōku ingoa

Te Whanganui-a-Orotū Taiwhenua Representative

Ko Maungaharuru te maunga
Ko Tūtira te wai ū
Ko Te Ngaru te awa
Ko Tangitū te moana
Ko Tangoio te marae
Ko Hori Reti tōku ingoa



Hori Reti



Michael Anthony Paku

Heretaunga Taiwhenua Representative

Ko Kahurānaki te maunga
Ko Ngaruroro te awa
Ko Ruahāpia te marae
Ko Ngāti Hawea te hapū
Ko Tākitimu te waka
Ko Ngāti Kahungunu te iwi
Ko Mike Paku tōku ingoa

Te Wairoa Taiwhenua Representative

Ko Moumoukai te maunga
Ko Nuhaka te awa
Ko Tamakahu, Ko Te Poho o te Rehu ngā marae
Ko Rākaipaaka te hapū
Ko Tākitimu te waka
Ko Ngāti Kahungunu te iwi
Ko Riwai Rill Meihana tōku ingoa



Rill Meihana



John Barry
Heperi-Smith

Tamatea Taiwhenua Representative

Ko Te Rangi-tapu-ā-whata te maunga
Ko Whatumā te waiū
Ko Takitimu te waka
Ko Te Rongo-a-Tahu te marae
Ko Ngāti Kahungunu te iwi
Ko Ngāi Te Kikiri-o-te-Rangi, ko Ngāi Tahu
Mākanui, ko Ngāi Toroiwaho ngā hapū
Ko John Barry (JB) Heperi-Smith tōku ingoa

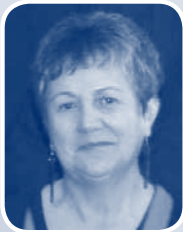
Board Members 2016-2019



Hayden Hape

Kahungunu ki Tāmaki-nui-a-Rua Taiwhenua Representative

Ko Kaitoki te marae
Ko Ngāti Pakapaka te hapū
Ko Tākitimu te waka
Ko Ruahine te maunga
Ko Manawatū te awa
Ko Ngāti Kahungunu te iwi
Ko Hayden Hape tōku ingoa



Marama Tuuta

Kahungunu ki Wairarapa Representative

Ko Pāpāwai te marae
Ko Ngāti Moe te hapū
Ko Takitimu te waka
Ko Ngāti Kahungunu te iwi
Ko Marama Tuuta tōku ingoa



Owen Purcell

Taura here Representative

Ko Kahurānaki, ko Te Mata o Rongokako ngā maunga
Ko Ngaruroro te awa
Ko Ruahāpia te marae
Ko Ngāti Hori, ko Ngāti Hawea ngā hapū
Ko Tākitimu te waka
Ko Ngāti Kahungunu te iwi
Nō Kirikiriroa ahau
Ko Owen Purcell tōku ingoa



Noelene Smiler

Taura here Representative

Ko Whakapunake tōku Maunga tipua
Ko Hangaroa, ko Kaitaraha, ko Ruakituri ōku awa
Ko Te Reinga tōku Marae
Ko Tuarenga tōku Whare nui
Ko Hinekōrako tōku Whare kai.
Ko Ngāti Kōhatu, ko Ngāti Ruapani, ko Ngāti Hinehika ōku hapū
Ko Ngāti Kahungunu tōku Iwi
Ko Tākitimu tōku waka
Ko Noelene Mauritania Smiler tōku ingoa

Staff Members 2015-2016

This management structure has been in place for the past six years and allows an integrated approach to all activities planned within the tari, however we are currently reviewing the structure to support future iwi development. The four units within the current structure are as follows: Environment and Natural Resources, Te Reo, Tikanga and Mātauranga, Health and Wellbeing and Smart Services. Units are managed by a Director and all work streams align to the 25 year vision and the needs of our whānau, hapū iwi. Chrissie Hape was seconded from the Ministry of Social Development to work as a Partner Advisor between the Ministry and the iwi to support outcomes for whānau.

During the 2015/2016 year, Irihāpeti Roberts joined the Te Reo Directorate to contribute to a fixed-term research project on the unique dialect of Kahungunu. We were also joined by Danielle Keil who is working with our events team to coordinate the Kahungunu Festival allied events taking place during Te Matatini. We farewelled Jenny Smith, Dr James Graham, Hamahona Ambler and recently Naina Watene. Each of these kaimahi have left to pursue other opportunities. Hamahona Ambler re-joined the tari as the Project Manager for Te Kāhui Ōhanga o Takitimu, a shared resource to all Kāhui partners to advance our shared aspirations.



Dr Adele Whyte
Chief Executive



Jonathan Dick
Director of
Environment and
Natural Resources



**Jeremy Tātere
MacLeod**
Director of Te Reo,
Tikanga and
Mātauranga



Jenny Smith
Director of Health
and Wellbeing
(October 2015)



Chrissie Hape
Iwi/CYF Partnership
Advisor



Ruth Wong
Director of Smart
Services and
Communications
Advisor



Ngaio Tiuka
Environment and
Natural Resources
Senior Analyst



Alex-Ann Edwards
Te Reo Research
Analyst



Irihāpeti Roberts
Research Analyst
Ngāti Kahungunu
Dialectal Variations



**Hamahona
Ambler**
Huakina Mai
Project Manager
(February 2016)



Dr James Graham
Kahungunu
Cultural Standards
Project Manager
(January 2016)



Kerrin Fair
Database
Administrator



Michelle Ferris
Senior
Administrator
& Receptionist



Te Rangi Huata
Events &
Promotions
Manager



Hine Hape
Finance Officer



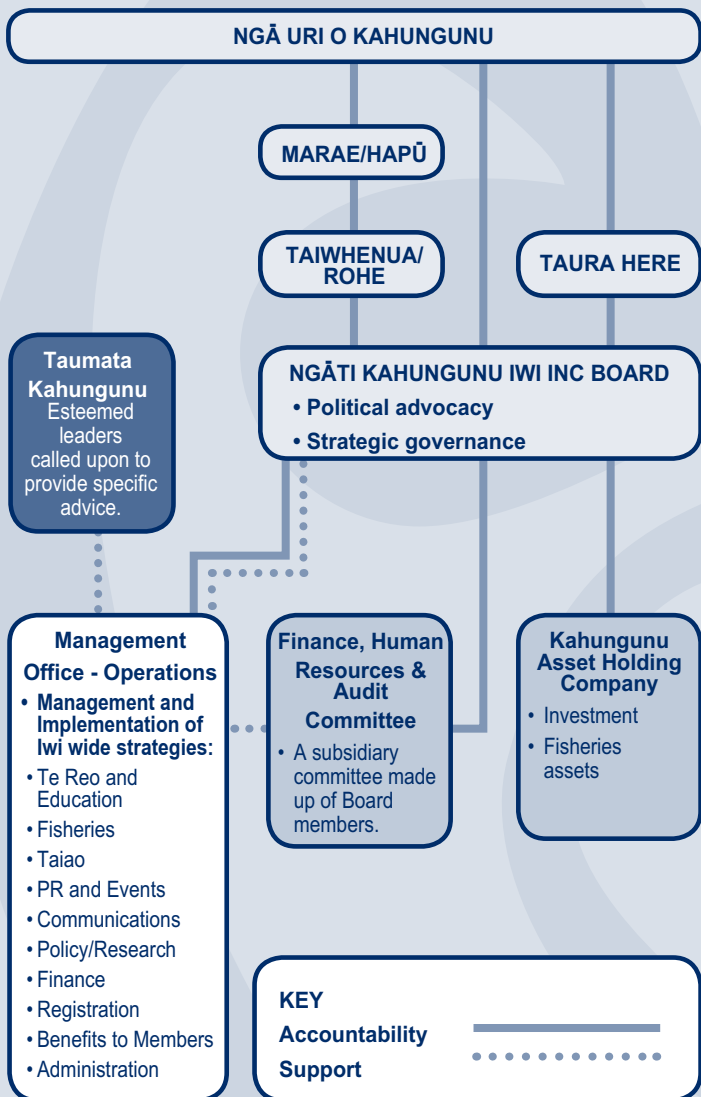
**Danielle
Keil-Lambert**
Kahungunu
Allied Events
Coordinator



Naina Wātene
Executive
Assistant
(September 2016)

Ngāti Kahungunu Iwi Incorporated Organisation Structure

Ngāti Kahungunu Iwi Incorporated is governed by ngā uri o Kahungunu through its constitutional organisational structure. This diagram depicts the structure of the iwi from marae/hapū to governance and through to management and workstream level.



Te Reo, Tikanga & Mātauranga

Ngāti Kahungunu e noho mai rā i ō tātau tini marae kāinga, tēnā rā koutou. Ka hoki ngā mahara ki ngā mate nui o te tau i takoto ki runga i ō tātau marae maha. Kāre he tangata kotahi kāre i whakararururungia e te ringa kaha o aituā i tēnei tau, inā rā te huhua! Nā reira, koinei te whakamaumahara ake ki ngā kurupounamu o roto i ō tātau hapū maha kua tangingia i roto i te tau kua taha ake nei.

Inā rā te maha o ngā kaupapa whakarauora kua oti i a mātau i tēnei tau. Ka mihi mātau ki a Irihāpeti Roberts, nō ngā kāwai o te Wairarapa, o Takapau me Waimārama, i hono mai ki te tari i tēnei tau hai kairangahau i te kaupapa rangahau i ngā Ngāti Kahungunutanga o te reo. Nō tātau te waimarie i a ia me ōna pūkenga, tae noa ki tāna tautoko i ngā tini kaupapa a te iwi. Ka mihi hoki mātau ki a Dr. James Graham i wehe i a mātau i te Kohi-tātea o tēnei tau nei. E mihi ana mātau i ōna hekenga werawera ki tōna anō iwi, arā, ki a Ngāti Kahungunu, ā, e tino rangonatia tonutia nei tōna ngarotanga i waenganui i a mātau. Ko te tūmanako kai te tau katoa tāna noho i Te Waipounamu, i a ia kua hoki nei ki te ao mātauranga. Tēnā koe, James!

Ki tā mātau titiro, ko Ngāti Kahungunu kai mua rawa atu e haere ana i roto i te ao whakarauora reo. Kai te titirohia tātau e te motu, waihoki tā tātau whakapau kaha ki tō tātau reo. Kua aua atu tō tātau reo e whakahemohemo ana, ā, kua takoto te mānuka ki a Kahungunu – taki oho, koi ngaro tō reo! Ko te kaupapa nui o te wāhanga tuatahi o te tau, ko te kaupapa e kīia nei ko “Te reo ki tua!”. E rua rā te roa o taua hui, ā, i reira ngā tino mātanga reo o te iwi tae noa ki ō te motu. Kāre i ārikarika ngā taringa i tae atu ki te whakarongo ki ngā tohunga nei. Nā te hui nei i korikori ai a Kahungunu, otirā i hikaka anō ai te hunga pakanga mō tō tātau reo.



Wairarapa hapū welcoming Ngāti Kahungunu to the Whakamana wānanga held at Te Kura Kaupapa Māori o Te Wairarapa. Picture taken by Irihāpeti Roberts.

Te Reo, Tikanga & Mātauranga

E rua ngā kaupapa nui i mauria ki te tai whakarunga, arā ki te Wairarapa i tēnei tau, arā, ko te wānanga i te whaikōrero me te karanga, me te kura reo. I rawe ki a mātau te hari i ngā kaupapa nui nei ki tērā o ō tātau kāinga, kia rangona ai e te katoa. Me mihi ki te hau kāinga i tā rātau manaaki mai i ngā hui e rua nei.

Kua kōwhiria e ngā iwi o Te Tai Rāwhiti a Jeremy Tātere MacLeod hei mema mō Te Mātāwai – te whakahaere hou kua whakatūria hei ārahi i ngā mahi a te iwi nui tonu ki te whakarauora i te reo Māori.

Ki tā Selwyn Parata, heamana o Te Rūnanganui o Ngāti Porou, te māngai anō hoki mō te rōpū whiriwhiri, i eke katoa te hunga i tāpaea mai nei ō rātau ingoa mō te tūranga ki ngā taumata, e tika ana kia whakarangatirahia rātau katoa. He nui hoki ngā pūkenga o Jeremy e hāngai ana ki Te Mātāwai.

Ko tētahi kaupapa nui i tēnei tau, ko te kaupapa rangahau e kimi nei ngā rerekētanga ā-reo i roto o Ngāti Kahungunu. He kaupapa tēnei kua roa e wawatatia ana, ā, nō te tau nei i taea ai i runga i te pūtea tautoko a Te Taura Whiri i Te Reo. Ko te whāinga matua, ko te pupuri i ngā 'Kahungunutanga o te reo Māori' hai whakamahi mā ngā mokopuna kia kore ai e ngaro ngā tūmomo tangi ake o ō tātau mātua tīpuna. He mahi kaitā tēnei, arā ko te kimi i ngā putunga kōrero me te āta tātari kia kitea ai ngā āhuatanga ā-reo e hāngai kau nei ki a tātau o Ngāti Kahungunu me ō tātau hapū maha. Kai te waimarie mātau i te momo pēnei i a Joe Te Rito rāua ko Lee Smith, taua hunga kua aua atu e rangahau ana i tēnei kaupapa nei.

Ngāti Kahungunu, e kore e mutu tā mātau whakapātaritari i a tātau anō e pā ana ki te tāmatemate o te reo Māori. E ora ai tō tātau reo, me kōrero i roto i ō tātau kāinga. Kai te kāinga te oranga o tō tātau reo. Ko te tino whāinga o te rautaki, ko te tukuihotanga o te reo Māori hai reo kōrero i te matua ki te tamaiti, ka eke ana ki tērā, kātahi anō pea ka taea te kī kua ora anō tō tātau reo. Koinei te mihi ake nei ki a tātau tokoiti nei e whakapono nei ki tō tātau reo, e whakapau kaha nei, e pakanga nei kia ora tonu ai tō tātau reo hai ngā tau tini, tau mano. Kahungunu, kia eke!



Ngāti Kahungunu linguist presenting a thought-provoking research piece regarding the dialectal variations of the tribe.

Environment & Natural Resources

Key Highlights for the Environment and Natural Resources Unit

Our Unit has had another busy year advocating for the rights and interests of Ngāti Kahungunu whānau and hapū. We have worked towards implementing our key goals of:

- Advocate for Ngāti Kahungunu objectives and values to be incorporated into natural resources decision making and policy developed by local, regional and central government.
- Commence a review of the Kahungunu Ki Uta Kahungunu Ki Tai strategic plan.
- Support hapū to develop and progress hapū management plans to enhance their role as Kaitiaki of the natural resources.
- Develop quality relationships with organisations to assist us to achieve our natural resource objectives which help to build the capacity and capabilities of our people.

We have started to review the Kahungunu Ki Uta Kahungunu Ki Tai Marine and Freshwater strategic plan. We are aiming to complete the review in the new financial year. We outlined the new planning framework for the strategic plan at the Fish Hook Summit on 12 May. A new element of the strategic plan will be the inclusion of policies that will describe our expectations for environmental standards within te ao turoa.

The pressure to respond to external agency business plans, government policy, legislative changes, and requests for information is relentless. We are confident that our new approach for the “Kahungunu Ki Uta Kahungunu Ki Tai Marine and Freshwater” strategic plan will help in guiding our engagements with the external agencies. We are contributing to Te Kotahitanga Tiaki Taiao, which is a group of environmental practitioners from hapū, Taiwhenua and settlement groups seeking to share information and build our capabilities to help us all achieve our common taiao aspirations.

The iwi has assisted Te Hauke and Poukawa Waiu land owners to protect the lake and to advocate for the wetlands against land user representatives, through the Environment Court process and appeals on Hawke’s Bay Regional Councils (HBRC) plan changes. We continue to participate in the Hawke’s Bay Regional Council TANK (Tutaekuri, Ahuriri, Ngaruroro, and Karamu) collaborative planning process, working with ngā hapu o Tutaekuri awa, the Heretaunga Taiwhenua and Runanganui (mandated marae Taiao representatives) and the Taiao working group. We’ve entered into a contract with HBRC to document mana whenua values and attributes for the Ngaruroro catchment.

Ngāti Kahungunu appealed to the environment court on the proposed Hastings District Council plan change primarily on two matters. We appealed on waahi tapu and waahi taonga, which included working collaboratively with the Maungaharuru Tangitū Trust and we are expecting a positive outcome on this appeal. Our second appeal was to protect the Heretaunga aquifer. We are standing firm on ensuring the water quality of the aquifer is protected. We’re confident the outcome of these appeals will align with our recent Environment Court success. Given the recent gastro outbreak in Havelock North, we are expecting any opposition to disappear to our requested amendments to the Hastings plan change from the various lobby groups.

We held another Geo-Nuclear Science research wananga in Wairarapa and we have another one planned for Porangahau in October. These wananga continue to build on our understanding of earth science including

Environment & Natural Resources

earthquakes, groundwater hydrology, tsunamis, climate change and sea level rise. We also held more pāua monitoring wananga at Waimarama and a workshop analysing the gathered monitoring data at the EIT.

It's been another mammoth effort supporting the work of our CE and Chairman in their endeavours at the Iwi Leaders Group, particularly the work relating to the pursuit of our rights and interests to freshwater. We've helped to present information at the numerous Iwi Leaders regional update Hui about the progress of this work.

We've provided submissions on a range of matters including, Fisheries Act review, review of Te Ohu Kaimoana, Resource Amendment legislation, national freshwater policy, Kermadec Islands marine ocean sanctuary, climate change, petroleum block offers and the review of the Conservation Management Strategy. We've also made submissions on the Trans Pacific Partnership Agreement (TPPA) and prepared advice for the select committee hearing into the TPPA.

During the year we have attended a lot of meetings with commercial fishing representatives, government representatives and recreational fishing advocates to discuss voluntary reductions in the commercial fishing effort in Hawke Bay. We helped to fund a gap analysis research report into the impact of intensive land use activities on the marine ecosystem. We continue to advocate for methods to reduce the rate of juvenile fish mortality and to reduce the discard rates for commercial trawling.

We held an oil and gas symposium during the year and our Unit sponsored Murray Hemopo from Rongomaiwahine to participate in the Marine Mammal Observers programme which is run by the oil industry. A total of four people from our region participated in this training with the goal of



Environment & Natural Resources

becoming registered marine observers on board the seismic surveying ships. Schlumberger are seeking to commence 3D off-shore seismic surveying on the East Coast in the summer of 2016 to 2017.

Key Focus for the Year to 30 June 2017

Our goals for the current year include:

- Advocate for Ngāti Kahungunu objectives and values to be incorporated into natural resources decision making and policy developed by local, regional and central government.
- Complete the review of the Kahungunu Ki Uta Kahungunu Ki Tai strategic plan.
- Support hapū to develop and progress hapū management plans to enhance their role as Kaitiaki of the natural resources.
- Develop quality relationships with organisations to assist us to achieve our natural resource objectives which help to build the capacity and capabilities of our people.

An important priority for our Unit for the year will be to prepare the evidence for the Waitangi Tribunal inquiry into the contemporary claim to freshwater and geothermal resources. If you would like to be involved with this claim please get in touch with us. We will seek to run wānanga and hui throughout the year, to share information and provide advice on matters relating to te ao turoa.

Ma te Atua e manaaki, e tiaki i ngā wa katoa.

Jonathan Dick

Pouarataki - Director, Environment & Natural Resources



Benefits to Members

SUPPORTING OUR MEMBERS

Ngāti Kahungunu Iwi Incorporated is pleased to be able to provide benefits for its registered Kahungunu membership.

Over the 2015/2016 year, 1015 new members registered with Ngāti Kahungunu Iwi Incorporated bringing our total registered membership to 25,040 members. A great majority of the new members registered as part of the criteria to receiving an iwi benefit. The organisation offers a number of benefits to its members, such as education scholarships including te reo scholarships, sporting & cultural sponsorships, training and employment opportunities, free or subsidised admission into iwi events and access to opportunities being offered by our business partners. The iwi provides a pataka 10kg box of fish to support tangi of iwi members.

COMMUNICATIONS

The organisation takes pride in communicating with its membership and the public. The Annual Report; an interactive website; our Kahungunu e-panui network; an online and physical calendar of events; our Tīhei Kahungunu 8 page Hawke's Bay Today publication; Matangirau magazine, Radio Kahungunu advertisements; youtube promotional videos; and media releases; are some of the ways we like to communicate with our members and also the wider public. We are always looking to improve our communications to ensure we are reaching our rangatahi, our kaumātua and everyone in between. Our Facebook page is the most popular form of communication. We have 8,986 likes on our page and our website received 8,152 unique page visits.

REGISTRATIONS

The iwi registration database is increasing steadily each year, however as people move without giving us a forwarding address, we lose touch with members along the way. It is important to us that we have your current details so we can ensure you are aware of benefits you are entitled to.

New Members Summary by Area Report:

Members Entered between 01/07/2015 –30/06/2016

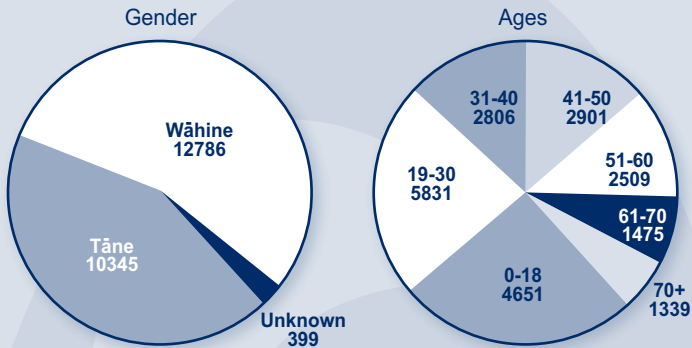
| | |
|-------------------------|-------------|
| Ngā maatawaka | 10 |
| Heretaunga | 270 |
| Tāmaki-nui-a-Rua | 51 |
| Tamatea | 45 |
| Wairarapa | 132 |
| Te Whanganui-a-Orotū | 51 |
| Wairoa | 390 |
| Nga Parirau o te Ika | 25 |
| Te Waipounamu | 14 |
| Te Upoko o te Ika | 24 |
| Te Raki/Tamaki Makaurau | 3 |
| Grand Total | 1015 |

Iwi Members - Growth by month



Benefits to Members

Kahungunu - Statistics of Registered Tangata Whenua Members



EVENTS

Ngāti Kahungunu Iwi Incorporated strives to produce and sponsor events that strengthen hauoratanga, whanaungatanga and Kahungunutanga.

Waiata Māori Music Awards September 2015, Hastings Sports Centre, Hastings

This national event seeks to develop, encourage and honour the achievements of outstanding traditional and contemporary music composition and performance annually. Ngāti Kahungunu Iwi is proud to sponsor this superb platform for music excellence in Hawke's Bay.

2015 Kahungunu Sports Awards, Hastings Sports Centre, Hastings

Mounted in October to acknowledge Kahungunu sports champions on the local, national and world stage these awards have sold out every year. Our guest speaker was local rugby league international player Tohu Harris. Joint winners of the 2015 Kahungunu Sportsperson of the Year award were Rugby League player Tohu Harris and halfback Aaron Smith. This event was retired in 2015. A new initiative to acknowledge Kahungunu's finest is being considered.

(Centre) Monique Heke represents Te Puni Kokiri the sponsor of the Kahungunu Senior Sportsman of the Year award which went jointly to Aaron Smith and Tohu Harris. Pictured are Aaron's mum Bridget Smith, Monique Heke and Tohu Harris.



Benefits to Members

Iron Māori December 2015, Ahuriri, Napier

Thousands of whānau came to support their loved ones as they swam, ran and cycled around Ahuriri and the surrounding countryside. It was inspiring to see hundreds of youngsters in their special event, and thousands of their parents in the half marathon, cross the finish line. Ngāti Kahungunu Iwi is pleased to sponsor this wonderful homegrown international lifestyle changing event by Heather & Wayne Skipworth, Missy & George Mackey, Lee Grace and his wife Kiri Bird.



AGM Pā Sports 2015 'Team Te Whatuiapiti'

Kahungunu AGM Pā Sports Day 2015, Splash Planet, Hastings

In November we hosted the best sports day yet with over 1,500 players from our marae competing in netball, 3 on 3 basketball, volleyball, kiwi sports, touch and Kī-o-rahi. Our AGM meeting was again held outdoors at Splash Planet and the meeting ended in an hour. Families came to join us from afar including Hamilton, Wellington, Masterton, Dannevirke and Wairoa.



AGM Pā Sports 2015 'Team Pakowhai'

Waitangi Day Kahungunu Big 9 Celebrations 2016, Hawke's Bay Sports Park, Hastings

Kahungunu hosted our biggest kapa haka regional competition to date with a record 14 team entries. The four teams that advance to Te Matatini 2017 are Te Rerenga Kotuku, Ngāti Kahungunu ki Heretaunga, Tamatea Arikinui and Ngāti Ranginui. Healthy foods and free kiddies rides were on offer and Hawke's Bay DHB gave away free pears and water via a water truck to grateful families. Teams competed in volleyball, netball, 3 on 3 basketball, Kī-o-rahi and a rugby league carnival for kids. Our Zero Waste programme diverted 80% of the event's waste from the landfill.

Benefits to Members



AGM Pā Sports 2015
'Team Nuhaka'

AGM Pā Sports 2015
'Team Taupunga'



AGM Pā Sports 2015 'Team Matahiwi'

Matariki June 2016, Kahungunu wide

Our 16th annual Matariki celebrations again attracted thousands of people to welcome the Māori new year with fun, feasting and festivity.

Hayden Hape and his big team of volunteers had the crowds rocking in Dannevirke with a kaumātua dinner and a massive fireworks display that drew a huge crowd. Zac Makoare and his team put on the best event ever at Te Aute College. Over in Flaxmere thousands gathered to enjoy a great night of entertainment and fireworks and we're grateful to the organisers husband and wife team Alayna and Thompson Hokianga. In Napier, Mary Martin from Te Whanganui-a-Orotū Taiwhenua did a great job to manage a successful Marine Parade event at the Soundshell. Wairoa again had a full week of activities with another huge turnout for the fireworks. Thanks to local organisers Sara Bird and Esta Wainohu. Tirau Te Tau put together a series of two smaller events in Masterton for Matariki. We appreciate our funders Te Puni Kōkiri, Trust House, First Light Foundation, Sport Hawke's Bay and Creative Communities.

Our Events Commitment

By Kahungunu, For Kahungunu, For Everyone, Forever!

Benefits to Members

GENERAL SPONSORSHIPS

Ngāti Kahungunu Iwi Incorporated receives a number of sponsorship applications throughout the year. The purpose of sponsorship is to encourage and to recognise the pursuit of cultural and sporting excellence by Ngāti Kahungunu. The following recipients received funding in the 2015/2016 financial year.

| Recipient Name | Event of Activity | Value |
|--|---|------------|
| Wairoa Pā Haka Organisers | Wairoa Pā Haka | \$1,000.00 |
| Ahuriri Houkamau | 2016 Va'a World Sprints, Australia | \$500.00 |
| Ashton Robinson | 2016 NZ Open Mixed Touch - Trans Tasman series | \$500.00 |
| Ayesha Hohepa | 2015 Nga Manu Korero a Motu Competition | \$250.00 |
| Charles Makea | NZ National Downhill Mountainbike Champs | \$250.00 |
| Houngarea Marae | Houngarea Marae Centenary Celebrations | \$869.00 |
| Cheyenne Whaanga | 2015 National Womens Boxing Champs | \$250.00 |
| Dale Thomas | 2016 Va'a World Sprints in Australia | \$500.00 |
| Damarius Hokianga-Heather | NZ Junior Touch Tournament | \$250.00 |
| Dean James | 2016 Waka Ama Sprint World Champs, Australia | \$500.00 |
| Deena Puketapu | NZ Mixed 'Touch blacks' Trans Tasman Touch Competition | \$500.00 |
| Tāmaki-nui-a-Rua Wairarapa Trust | AIP Signing - Event Support | \$240.00 |
| Hannah Cotter | U13 HB Hockey, National premier girls tournament | \$250.00 |
| Hawkes Bay Open Mixed Touch Team | 2016 NZ Touch Nationals 2016 | \$1,000.00 |
| Hawkes Bay Open U21 Mixed Touch Team | 2016 NZ Touch Nationals | \$1,000.00 |
| Hawkes Bay U15 Girls Softball Team | NZ U15 Softball Tournament | \$1,000.00 |
| Heretaunga Basketball Tamariki Tane U13 | National Māori Basketball Tournament | \$500.00 |
| Heretaunga U11 Basketball Kotiro | National Māori Basketball Tournament | \$500.00 |
| Heretaunga U13 Kotiro Basketball | National Māori Basketball Tournament | \$500.00 |
| Jayde Paenga | NZ Junior Touch Tournament | \$250.00 |
| Heretaunga Pakeke Basketball | Heretaunga Pakeke Basketball, National Māori Basketball Champs | \$500.00 |
| Kahungunu Taumata Rau J19 Wāipureku Waka Ama | Va'a World Sprints in Australia | \$1,000.00 |
| Kahurangi Beamsley Allan | NZ U14 Boys' Softball, Australia | \$500.00 |
| Kaitlin Cotter | U15 HB Hockey, National premier girls tournament | \$250.00 |
| Karamu High School | 2016 National Ki O Rahi Tournament | \$500.00 |
| Karybe Te Kira | HB U15 Boys Basketball, Wellington | \$250.00 |
| Karybe Te Kira | HB U15 Māori Basketball Nationals, Wellington | \$500.00 |
| Kayla Fromont Beach | U15 HB Hockey, National premier girls tournament | \$250.00 |
| Keho Allen | 2016 Waka Ama Sprint World Champs, Australia | \$500.00 |
| Kiana Jessup-Tahau | HB U15 Touch Nationals | \$500.00 |
| Kopiri Downes-Williams | Takitimu Māori Mens Hockey, National Māori Hockey Tournament | \$250.00 |
| Kyla Apiata | NZ Basketball Koru Development Tour | \$500.00 |
| Leah Cammell | City of Auckland Pipe Band, Interceltic Festival of Lorient, France | \$250.00 |
| Lesley Lenden | 2016 Waka Ama Sprint World Champs, Australia | \$500.00 |
| Maika Nuku | 2015 IRF whitewater rafting R6 World Champs | \$500.00 |
| Marama Makea | NZ Junior Whitesox, Hawaii | \$500.00 |
| Matthew Hiha | HB U15 National Hockey tournament | \$250.00 |

Benefits to Members

| Recipient Name | Event of Activity | Value |
|---|---|-------------|
| Melanie Gettins | NZ Whitesox Softball - 2016 World Champs, Canada | \$500.00 |
| Mereana Makea | NZ Whitesox Softball, 2016 World Champs, Canada | \$500.00 |
| Mike Tamati | Inaugural 2016 Kevin Tamati Rugby League Tournament | \$1,000.00 |
| Na Raihania | Raihania Shearing and Woolhandling Championships | \$1,000.00 |
| Ngāti Kere Kaumātua - Pōrangahau Connect | Kaumātua trip to the ANZAC exhibitions @ Te Papa | \$1,000.00 |
| Nichola Mark | Nichola Mark - IDBF World Cup Crew Championships - Australia (Dragon Boat NZ) | \$500.00 |
| Nicky Lee Epps | 2016 Va'a World Sprints, Australia | \$500.00 |
| Nova Tautari | Nova Tautari - 2016 Waka Ama Sprint World Champs, Australia | \$500.00 |
| NZ Nurses Organisation | 10 kete 2016 Indigenous Nurses Conference | \$400.00 |
| NZU23 Mens Rafting Team | NZU23 Mens Rafting Team - NZU23 White Water Rafting, Indonesia | \$2,000.00 |
| Rahere Heke | 2016 ITF Taekwondo World Champs | \$500.00 |
| Richmond School | Richmond School - 2015 Ngāti Kahungunu Primary School Kapa haka | \$1,000.00 |
| Rita Hokianga | NZ Womens Whitesox- 2016 World Champs, Canada | \$500.00 |
| Roni Nuku | 2015 IRF whitewater Rafting R6 World Champs | \$500.00 |
| Ruth Cammell | City of Auckland Pipe Band, Interceltic Festival of Lorient, France | \$250.00 |
| Salem Watson | HB U17 Boys Touch, NZ Junior National Touch Tournament | \$250.00 |
| Selah Hart | Aotearoa National Māori Netball Tournament | \$250.00 |
| Shane Foster | NZ TAG Football World Cup, Australia | \$500.00 |
| Shayne Paenga | NZ Junior Touch Tournament | \$250.00 |
| Soprt Hawkes Bay | Wairoa Sport Awards; 50+ category sponsor | \$300.00 |
| Stephen Atkenson | NZ Mens Māori Hockey, NZ Hockey Affiliates Tournament | \$480.00 |
| Te Ataarangi O Kahungunu Ki Te Wairoa | 30yr Celebrations | \$11,000.00 |
| Te Kura Kaupapa Māori O Ngāti Kahungunu Ki Heretaunga | 2016 Secondary School kapa haka hosting | \$1,000.00 |
| Te Matau A Maui Māori Teachers Association | NZ Secondary School kapa haka Para Kore Zero Waste initiative, Board game, Graphic design | \$20,000.00 |
| Te Matau A Maui Voyaging Trust | 2016 Art Deco Opening Ceremony | \$1,000.00 |
| Te Taitimu Trust | 2016 Rangatahi Summer Camp | \$2,500.00 |
| Te Tohu Taakaro o Aotearoa Charitable Trust | National Māori Sport Awards | \$1,500.00 |
| Te Wheturere Ferris | U17 Māori Rugby League | \$250.00 |
| Teagan Tautala-Hanita | U15 NZ Softball Friendship Series | \$500.00 |
| Tipene James | 2016 Waka Ama Sprint World Champs, Australia | \$500.00 |
| TJ Daley | 2016 Va'a World Sprints, Australia | \$500.00 |
| Trevor Taurima | 2016 Waka Ama Sprint World Champs, Australia | \$500.00 |
| Truman Stuart | 2016 Waka Ama Sprint World Champs, Australia | \$500.00 |
| Tyrese Davies | U18 NZ Koro Team, Australian Country Cup | \$500.00 |
| Tyrin Thomas | 2016 Waka Ama Champs, Australia | \$500.00 |
| U11 Tane Heretaunga Basketball | National Māori Basketball Tournament | \$500.00 |
| Valentine Irwin | 2016 Va'a World Sprints, Australia | \$500.00 |
| Waiata Māori Music Awards | 2015 Waiata Māori Music Awards | \$15,000.00 |
| Te Timatanga Trust | 2016 Iron Māori | \$10,000.00 |
| Whariki Trust | 2016 Maraefit Haka 10s | \$1,000.00 |
| Hawkes Bay Rugby Union | Wairarapa vs Hawkes Bay | \$25,000.00 |

Benefits to Members

SCHOLARSHIP REPORT

Ngāti Kahungunu Iwi Incorporated acknowledges that education is the key to personal, whānau, hapū and iwi development. Each year the iwi board allocates a budget to support Ngāti Kahungunu tertiary students. This year Victoria University provided a joint scholarship fund for Kahungunu taura studying at Victoria University. Their financial partnership enabled the iwi to support students who may have otherwise been unable to be supported due to limited funds. Most of the scholarship recipients were from Heretaunga, studying in the area of Health and wellbeing. This year we received 89 general and 20 research scholarship applications of which 83 students received a \$500 scholarship and 3 students (as highlighted in the table below) received a Research scholarship worth \$5,000. Congratulations to all recipients.

| Surname | Firstname | Taiwhenua | Qualification sought |
|-----------------|------------------------|----------------------|---|
| AITCHISON | Ricki-Lee | Wairoa | Bachelor of Medicine & Surgery |
| ALEXANDER | Saskia | Tāmaki-nui-a-Rua | Physiotherapy |
| APATU | Tipene | Heretaunga | Bachelor of Arts |
| BARKER | Michael Ruatai Charles | Wairoa | Bachelor of Arts / Music |
| BARLOW | Helen Teresa | Heretaunga | Bachelor Degree |
| BARTLETT | Jeffery | Heretaunga | Masters of Architecture |
| BLACKMOORE | Rangi Fale | Heretaunga | Bachelor of Nursing |
| CALVERT | Shontay Jordan | Wairoa | Te Reo and Tikanga Māori |
| CANTERBURY | Manaia | Heretaunga | Bachelor of Arts (Māori) |
| DOYLE | Joanne | Wairoa | Masters of Applied Practice |
| FAKE | Daniel Blair Aronui | Te Whanganui-a-Orotū | Bachelor of Health Studies in Physiotherapy |
| FERGUS | Samantha Ashlee Caire | Wairoa | BSC in Marine Biology |
| FOX | Ririwai | Wairarapa | Bachelor in Psychology |
| GEMMELL | Wepiha Wainohu Ranapia | Heretaunga | Bachelor of applied Social Science |
| GILLIES | Orine | Heretaunga | Bachelor of Māori Performing Arts |
| GRAHAM | Aria Waiariki | Heretaunga | PHD |
| HADFIELD | Stevie Lace Heavenlee | Wairoa | Bachelor of Commerce |
| HAKIWAI | Serena | Heretaunga | BBS Marketing Major |
| HAMILTON | Jesse Ana | Wairoa | Bachelor of Engineering |
| HAMLIN | Eden Estelle Levia | Wairoa | Masters |
| HANARA | Rehia Te Amere | Heretaunga | BOT Māori Medium |
| HANSEN | Amber-Jade | Wairoa | Bachelor of Social Work |
| Hawkins | Chalee | Heretaunga | NZ Diploma in Business |
| HAWKINS | Desiree | Wairoa | Postgraduate in Nursing |
| HENARE | Te Whetu Marama | Wairoa | Bachelor of Arts (Māori) Honours |
| HUATA | Rahina Marie Huata | Heretaunga | Matauranga Māori - Masters |

Benefits to Members

| Surname | Firstname | Taiwhenua | Qualification sought |
|---------------|---|----------------------|--|
| HUATA | Ariki Tama Turanga | Heretaunga | Bachelor of Visual Arts and Design |
| HUATA | Te Moana Nui a Kiwa Pahauwera Awatere Huata | Heretaunga | European Master of Government |
| HUATA | Tuhoe | Heretaunga | Masters of Education |
| HUATA | Narelle Karanema | Heretaunga | Masters in Applied Management |
| HURA | Angelia Josephine | Heretaunga | Postgraduate Diploma in Science |
| HURST | Makere | Tamatea | Bachelor of Commerce (Hons) & Bachelor of Arts |
| HUTANA-TE AHO | Sarah Moana Rei Heretaunga | Masters of Arts | |
| JAMES | Dean Steven | Wairoa | Bachelor of Nursing |
| JOHNSON | Hannah Paige Wills | Wairarapa | Bachelor of Laws & Commerce |
| JONES | Mary Te Kuini | Heretaunga | Masters |
| JURY | Steffanie | Wairarapa | Bachelor of Medicine & Surgery |
| KAUKAU | Letisha-Huara Kotiro | Wairoa | Bachelor of Teaching |
| KENNY | Harata Moana | Heretaunga | Bachelor of Nursing |
| KEUNG | Sierra Terina | Tamaki Makaurau | PHD Sport and Recreation |
| KITCHIN | Lisa | Wairoa | LLB and Bcom |
| LEWIS | Aymee Shay Rose | Wairoa | Bachelor of Science |
| MARCHBANK | Jessica Joy | Wairarapa | Bachelor of Laws (LLB) |
| MAURICE | Emma | Heretaunga | PhD |
| McDonald | Adam | Heretaunga | Postgraduate Masters Public Health |
| MIDDLETON | Jahmayne Murry Wanoa | Te Whanganui-a-Orotū | Master of Architecture |
| MILDON | Sophie | Wairoa | Bachelor in Applies Social Sciences |
| MITCHELL | Chantel | Heretaunga | Degree in Early Childhood Education Bachelors |
| NICKLIN | Zeb Tamihana | Wairoa | Masters in Te Reo & Education |
| OHAIA | Hana | Heretaunga | Mastrs of Management Studies |
| PAEWAI | Natalie | Wairoa | Masters of Early Childhood |
| PAKAI | Elizabeth Enid | Heretaunga | PhD Philosophy |
| PAKU | Toni Joanne Te Aroha | Wairarapa | Bachelor of Social Work |
| PERE | Hamuera Russell | Heretanga | Bachelors of Medicine and Surgery |
| POGAI | Evie Te Aroha | Heretaunga | Bachelor of Nursing |
| PUI | Orine Robin | Heretaunga | Degree in Bachelor Social Work |
| PUKETAPU | Awhina Mei | Wairoa | Bachelor of Māori Visual Arts |
| PUNA | Allandria Terina | Te Whanganui-a-Orotū | Bachelor of Commerce |

Benefits to Members

| Surname | Firstname | Taiwhenua | Qualification sought |
|---------------|------------------------|----------------------|--|
| RANSFIELD | Ariti | Te Whanganui-a-Orotū | Doctorate in Education |
| REID | Terrence Glen | Heretaunga | Bachelor of Dental Surgery |
| RENATA | Janine Clair | Wairoa | Bachelor of Arts, Bachelor of Teaching |
| REYNOLDS | Sharon | Wairoa | Postgraduate Diploma Art Therapy |
| RITANI | Lorenzo | Wellington | Bachelor of Māori Arts |
| ROESTENBURG | Waireti | Wairoa | Doctorate in Psychology |
| ROPIHA | Rocky | Heretaunga | Bachelor of Arts |
| RUTA | Cheyenne | Tamaki Makaurau | Bachelor of Social Practice |
| RYAN | Ihaia Wayne Tauri Rehu | Heretaunga | Bachelor of Medicine & Surgery |
| SCOTT | Anahera | Wairoa | Masters of Education |
| SIEMONEK | Laurette | Wairarapa | Masters of Environmental studies |
| SIMICH | Arnia Tamihana | Tamaki Makaurau | Bachelor of Social Practice |
| SMITH | Bridget Louise | Heretaunga | Graduate Diploma in Teaching |
| SMITH | Alice Agnes | Tamatea | Masters of Applied Management |
| SOLOMON | Rikki Daniel | Wairoa | Masters in Applied Inigenous practises |
| SPOONER | Darlene | Heretaunga | Bachelor of Recreation & Sport |
| TAMATI | Sian Elaine | Heretaunga | Diploma in Business |
| TAPINE | Tania Teresa | Wairoa | Bachelor of Māori Arts |
| TAURIMA | Sarita | Wairoa | Bachelor of Communications |
| TE WAKE-MUNRO | Putiputi | Wairoa | Bachelor of Arts Māori |
| TIMU-PARATA | Carmen | Heretaunga | MN Nursing & Lactation consultant |
| TIPA | Kare | Heretaunga | Bachelor of Matauranga Mōri |
| TOMOANA | Gabrielle | Heretaunga | Masters of Applied Statistics |
| TUMATAROA | Shannon | Wairoa | Doctor of Philosophy |
| WHAANGA | Michael Thomas | Te Upoko o te Ika | Te Kura Maunga Toi |
| WHAKATOPE | George Walter | Wairoa | Bachelor of Engineering |
| WOODWARD | Georgia | Wairarapa | LLB (Hons) / BA |
| YATES | Margot Huiarei | Heretaunga | Bachelor of Art Te Reo Māori |

Kahungunu Asset Holding Company Ltd Chairman's Report



Kahungunu, He tangata ahuwhenua, mōhio ki te whakahaere i ngā mahi o uta me ō tai.

Tihei Kahungunu!

It is my pleasure to provide a report of the Kahungunu Asset Holding Company Limited (KAHC) results for the year ended 30 June 2016.

Background

KAHC was established in 2005 by Ngāti Kahungunu Iwi Incorporated (NKII) to receive and manage the Treaty of Waitangi fisheries settlement on behalf of Ngāti Kahungunu.

The KAHC has the vision of building a “successful business and economic profile for Ngāti Kahungunu and a mission of “growing our assets and to maximise the economic and wider returns from them for the collective good of Ngāti Kahungunu.” To achieve the vision and mission of KAHC, we have established four key result areas:

- Strong Governance and Organisational Robustness
- Fisheries sector
- Diversified asset portfolio, and,
- Quality relationships.

Nature of Business

The business of the KAHC is to receive and manage the fisheries settlement assets and other commercial assets of NKII for maximum commercial benefit. Each year the KAHC agrees its Statement of Intent with the NKII Board to set the strategic direction for the coming year. During the year we took a major step forward in our stated key result areas, with the purchase of a rock lobster processing facility in East Tamaki, Auckland. This factory was opened in April and we were honoured to have King Tuheitia and the Deputy Prime Minister in attendance. We have entered into a long term lease arrangement with the Fiordland Lobster Company. They will use this factory as their key North Island facility for the live export of fish to the Asian markets.

In July of this year Mike Paku accepted the Chairman position for the Finance, Risk and Audit Committee of NKII and has subsequently stood down as a Director of the KAHC. NKII have recently completed the interview process for the appointment of a replacement Director(s) on the KAHC. We welcome Heather Te Au-Skipworth, Pania Tyson-Nathan and the future contributions they will make to the business of the KAHC. NKII has re-appointed Rangī Manuel (Chairman), Taine Randell, Hayden Hape, Trevor Moeke, and Paora Ammunson as Directors on the KAHC. Trevor Moeke has also been appointed as our new Deputy Chair.

Fisheries Assets

The key addition to our fisheries assets is the purchase of the rock lobster processing factory. This asset is a welcome addition to our other key assets of fishing quota, shares in Aotearoa Fisheries Limited (AFL), shares Napier Mussels Limited, the Fiordland Lobster Company Limited, and cash. The KAHC received the following settlement assets to manage on behalf of Ngāti Kahungunu in accordance with the Māori Fisheries Act 2004:

Kahungunu Asset Holding Company Ltd Chairman's Report

- August 2006: 162,942,485 quota shares valued at \$9,436,871
- August 2006: 7874 income shares in Aotearoa Fisheries Ltd, valued at \$19,874,735
- July 2010: 501,527,278 quota shares valued at \$16,933,500
- September 2012: Aquaculture pre-commencement space settlement cash \$1,499,845
- Cash of \$2,030,106.

We have received a total of 7,874 shares in Aotearoa Fisheries Ltd (AFL) as part of the fisheries settlement which is a 6.3% holding in AFL. There will be no impairment of our shareholdings in AFL for this current year, although we may be required to undertake future re-valuations of our shareholdings in the future. During 2013 the company received a bonus issue of 7847 shares taking the company's holding in AFL to 15,748 shares. Of these 7,874 are voting and 7,874 are non voting shares.

With the support of our shareholder, we will continue to add value to our current fisheries assets. We have a programme in place at present, to investigate additional opportunities for further investment in the fisheries industry.

Non Fisheries Assets

The KAHC will also continue to seek opportunities to diversify our asset portfolio in non-fisheries assets. The Company takes a conservative approach to investment to deliberately reduce our exposure to undue risk. We are open to non-fisheries investment opportunities but it has to match our current investment strategy and risk profile.

Our investment in Tautane Station in 2013 has been an important strategic acquisition for KAHC. While KAHC's overall mortgage has increased following the purchase of the new rock lobster facility in Auckland, we remain on target to repay our mortgage on the Tautane Station within the next two years.

Financial Performance

KAHC has recorded a before tax profit of \$4,269,724.

Gross Profit 2008-2016

| | |
|------------------|--------------------|
| 30-Jun-08 | \$2,458,049 |
| 30-Jun-09 | \$2,028,815 |
| 30-Jun-10 | \$2,733,836 |
| 30-Jun-11 | \$3,409,582 |
| 30-Jun-12 | \$3,872,548 |
| 30-Jun-13 | \$5,372,656 |
| 30-Jun-14 | (\$2,463,070) |
| 30-Jun-15 | \$4,906,408 |
| 30-Jun-16 | \$4,269,724 |

Kahungunu Asset Holding Company Ltd Chairman's Report

Retained Earnings 2008-2016

| | |
|------------------|---------------------|
| 30-Jun-08 | \$1,402,100 |
| 30-Jun-09 | \$2,030,915 |
| 30-Jun-10 | \$3,364,748 |
| 30-Jun-11 | \$4,983,779 |
| 30-Jun-12 | \$7,216,327 |
| 30-Jun-13 | \$10,948,984 |
| 30-Jun-14 | \$6,845,914 |
| 30-Jun-15 | \$9,712,322 |
| 30-Jun-16 | \$12,342,046 |

Equity 2008-2016

| | |
|------------------|---------------------|
| 30-Jun-08 | \$33,742,051 |
| 30-Jun-09 | \$34,370,866 |
| 30-Jun-10 | \$52,222,903 |
| 30-Jun-11 | \$53,992,484 |
| 30-Jun-12 | \$57,724,877 |
| 30-Jun-13 | \$61,457,534 |
| 30-Jun-14 | \$57,124,464 |
| 30-Jun-15 | \$61,567,929 |
| 30-Jun-16 | \$69,540,526 |

During the year KAHC paid a dividend to NKII of \$1,640,000 which includes the payment of \$40,000 to the Taiwhenua Assistance Fund. KAHC has achieved a reported increase in equity of \$7,972,597, for the year ended 30 June 2016.

Financial performance by asset class

Shares in Aotearoa Fisheries Ltd

The company received a cash dividend from AFL of \$487,530, during the year.

The net book value (NBV) of the KAHC shareholding in AFL as disclosed in its Annual Report on 30 September 2015 was \$25,736,263.

Aotearoa Fisheries Shares NBV

| | |
|------------------|---------------------|
| 30-Jun-08 | \$19,359,459 |
| 30-Jun-09 | \$20,043,676 |
| 30-Jun-10 | \$22,547,575 |
| 30-Jun-11 | \$24,342,565 |
| 30-Jun-12 | \$24,969,398 |
| 30-Jun-13 | \$25,456,767 |
| 30-Jun-14 | \$19,777,784 |
| 30-Jun-15 | \$26,000,982 |
| 30-Jun-16 | \$25,736,263 |

Kahungunu Asset Holding Company Ltd Chairman's Report

Shares in Fiordland Lobster Company Ltd

KAHC owns 131,590 shares in Fiordland Lobster Company Limited (FLC). This represents a 6.06% holding in FLC. These shares have been included in the KAHC accounts at cost. The net book value of the KAHC shareholding in FLC as disclosed in its annual report at 31 March 2016 was \$9,785,972 (31/3/15: \$7,595,503).

Fiordland Lobster Dividend

| | |
|------------------|------------------|
| 30-Jun-08 | \$45,000 |
| 30-Jun-09 | \$91,431 |
| 30-Jun-10 | \$120,590 |
| 30-Jun-11 | \$144,749 |
| 30-Jun-12 | \$159,224 |
| 30-Jun-13 | \$159,224 |
| 30-June-14 | \$263,180 |
| 30-Jun-15 | \$197,385 |
| 30-Jun-16 | \$263,180 |

Fiordland Lobster NBV shares

| | |
|------------------|------------------|
| 30-Jun-08 | 1,136,064 |
| 30-Jun-09 | 1,788,061 |
| 30-Jun-10 | 2,658,504 |
| 30-Jun-11 | 3,733,886 |
| 30-Jun-12 | 4,297,351 |
| 30-Jun-13 | 5,087,409 |
| 30-Jun-14 | 5,934,847 |
| 30-Jun-15 | 7,595,503 |
| 30-Jun-16 | 9,785,972 |

Quota - ACE sales

KAHC earnings from the lease of Annual Catch Entitlement (ACE).

ACE Sales

| | |
|------------------|------------------|
| 30-Jun-08 | 2,755,961 |
| 30-Jun-09 | 2,551,163 |
| 30-Jun-10 | 3,163,240 |
| 30-Jun-11 | 3,153,147 |
| 30-Jun-12 | 3,300,792 |
| 30-Jun-13 | 3,276,042 |
| 30-Jun-14 | 3,309,567 |
| 30-Jun-15 | 4,113,130 |
| 30-Jun-16 | 3,568,914 |

Kahungunu Asset Holding Company Ltd *Chairman's Report*

Shares in Napier Mussels Ltd

Shares in Area 2 Finfish Management Company Limited

KAHC holds 1 share in Area 2 Finfish Management Company Limited (Area2). This represents a 2.56% holding in that company. These shares have been included at cost. The net book value of the KAHC share in Area2 as disclosed in its annual report at 30 September 2015 was \$573

Shares in Trident Systems General Partner Limited

KAHC owns 3,705 shares in Trident Systems General Partner Limited (Trident). This represents a 1.18% holding in that company. These shares have been included at cost. The net book value of the KAHC share as disclosed in its annual report at 30 September 2015 was Nil (30/09/2014: Nil).

Shares in Salco Quota Co Limited Partnership

KAHC acquired 100,000 units with Salco Quota Co Limited partnership during 2014. The units were purchased for \$100,000. An additional 135,135 units were purchased during 2016 for \$250,000. All units have been included at cost.

Shares in KAHC Investments Limited

KAHC owns 100 shares in KAHC Investments Limited. This company has not traded during the year.

Constitutional reporting

During the year to 30 June 2016 there have been no:

- Transactions with settlement quota that have resulted in a registered interest by way of caveat or mortgage being placed over the quota;
- Interest registered against the settlement quota shares;
- Sales or exchanges or acquisitions of AFL income shares.

Going Forward

KAHC is proud of the close working relationship it enjoys with the NKII Board. We also place a great value in our strong business relationships we have in place with our existing partners. I provide regular updates to the NKII Board throughout the year about the activities of the KAHC and we are working with our shareholder on evolving our current format for the Statement of Intent.

I believe our result for the year is pleasing, and I offer the attached consolidated statement of the KAHC financial performance for your consideration.

Tihei Kahungunu!



Ranghi Manuel
Chairman

Kahungunu Asset Holding Company Ltd

Directors



Rangi Manuel
*Independent
Representative/
KAHC Chair*

- General Manager, Kahungunu Executive ki Te Wairoa Charitable Trust
- Secretary/Trustee, Wairoa Waikaremoana Māori Trust Board
- Training provider to Hawke's Bay Seafoods
- Chairman, Ohuia Incorporation (discussions on horticulture proposal involving Ohuia Station)
- Mandated Representative/Negotiator, Te Tira Whakaemi o Te Wairoa



Taine Randell
*Independent
Representative*

- Director/Owner, Kaitiaki Land & Services
- Trustee, Tipu Green Limited
- Trustee, U-Turn Trust
- Director, Te Aranga Limited
- Director of the Ahuriri Airport Hawke's Bay
- Director of Hawke's Bay Rugby Union



Paora Ammunson
*Independent
Representative*

- Chairman, Wairarapa Bush RFU
- Chairman, Papawai Marae
- Director, Wairarapa Moana Incorporation
- Trustee, Kokomai Arts Festival Trust
- Independent Appointee, Wellington Regional Strategy Committee
- Director, Arotahi News Ltd
- Member & Negotiator, Ngāti Kahungunu ki Wairarapa Tāmaki-nui-a-Rua Treaty Claimant Group
- Manager of Sport & Leisure Society, Greytown



Trevor Moeke
*Independent
Representative*

- Company Director, Ākonga Holdings Ltd, Contract Management Consultancy
- Co-Chair, WINHEC (World Indigenous Nations Higher Education Consortium, Hawaii USA)
- Ministerial Appointment, Education New Zealand Stakeholder Advisory Group
- Principal Advisor, Crown Māori Capability Office of Executive, The Treasury

Kahungunu Asset Holding Company Ltd

Directors



Hayden Hape
NKII Board Shareholder
Representative

- Board Member, Ngāti Kahungunu Iwi Incorporated
- Chair, Tāmaki-nui-a-Rua Taiwhenua
- Member & Negotiator, Ngāti Kahungunu ki Wairarapa Tāmaki-nui-a-Rua Treaty Claimant Group



Mike Paku
NKII Board Shareholder
Representative/
KAHC Deputy Chair

- Board Member, Ngāti Kahungunu Iwi Incorporated
- Trustee, Health Hawke's Bay
- Chair, Te Haaro Board, Te Taiwhenua o Heretaunga
- Trustee, Te Matau-a-Māui Voyaging Trust
- Board Member, Hawke's Bay Museums Trust
- Committee Member, NKII Finance & Audit Sub Committee

We acknowledge outgoing Director Mike Paku who has been appointed by the Ngāti Kahungunu Iwi Incorporated Board as the Chair of the Finance, Risk and Audit Committee. Mike's loyal service and dedication on the Kahungunu Asset Holding Company Board has been valuable.



Kai moana

Ngāti Kahungunu Iwi Incorporated Summary Financial Statements

FOR THE YEAR ENDED 30TH JUNE 2016

Summary Consolidated Statement of Comprehensive Revenue and Expenses

| | Group* | | Parent* | |
|--|------------------|------------------|------------------|------------------|
| | 2016 \$ | 2015 \$ | 2016 \$ | 2015 \$ |
| REVENUE | | | | |
| Dividend | 760,841 | 874,375 | 1,680,000 | 2,080,000 |
| Other Income | 5,424,153 | 7,994,179 | 881,107 | 3,004,738 |
| Total Operating Income | 6,184,994 | 8,868,554 | 2,561,107 | 5,084,738 |
| LESS EXPENDITURE | | | | |
| Administration and Other Operating | 2,227,317 | 1,207,836 | 1,702,347 | 749,447 |
| Directorate Expenses | 788,354 | 1,814,380 | 459,415 | 1,488,051 |
| Governance | 774,063 | 718,480 | 593,811 | 545,812 |
| Total Expenses | 3,789,734 | 3,740,696 | 2,755,573 | 2,783,310 |
| Total Comprehensive Revenue and Expenses for the year | 2,395,260 | 5,127,858 | (194,466) | 2,301,428 |

Consolidated Statement of Changes in Net Assets & Equity

| | Group | | Parent | |
|--|-------------------|-------------------|-------------------|-------------------|
| | 2016 \$ | 2015 \$ | 2016 \$ | 2015 \$ |
| Opening Equity as at 1 July | 68,107,784 | 58,673,837 | 10,356,915 | 3,749,397 |
| Net Surplus/Deficit for the year | 2,395,260 | 5,127,857 | (194,465) | 2,301,428 |
| Total recognised revenues and expenses | 2,395,260 | 5,127,857 | (194,465) | 2,301,428 |
| Less Taiwhenua/ Tauahere distribution | (240,000) | (240,000) | (240,000) | (240,000) |
| Reversal of RIT Provision¹ | | | | |
| Cash Settlement as per Deed of Settlement | | 2,929,033 | | 2,929,033 |
| Quota Shares CRA3 as per Deed of Settlement | | 1,617,057 | (1,617,057) | 1,617,057 |
| Transfer to Advocacy Costs Reserve | | (400,000) | 200,000 | (400,000) |
| Advocacy Reserve² | | 400,000 | (200,000) | 400,000 |
| RIT Funds to KAHC | | | (5,382,873) | |
| Closing equity 30 June | 70,263,044 | 68,107,784 | 2,922,520 | 10,356,915 |

Consolidated Statement of Financial Position

As at 30 June 2016

| ASSETS | | | | |
|---|-------------------|-------------------|------------------|-------------------|
| Total Current Assets | 14,977,180 | 14,608,953 | 890,392 | 8,434,230 |
| Total Non-Current Assets | 66,007,068 | 59,901,067 | 2,757,880 | 2,765,921 |
| TOTAL ASSETS | 80,984,248 | 74,510,018 | 3,648,270 | 11,200,149 |
| LIABILITIES | | | | |
| Total Current Liabilities | 821,204 | 902,233 | 725,751 | 843,235 |
| Total Non-Curren Liabilities | 9,900,000 | 5,500,000 | - | - |
| TOTAL LIABILITIES | 10,721,204 | 6,402,233 | 725,751 | 843,235 |
| TOTAL EQUITY AND LIABILITIES AS AT 30 JUNE | | | | |
| | 80,984,248 | 74,510,018 | 3,648,270 | 11,200,149 |

The figures in the financial summary have not been subject to audit and should be read in conjunction with the audited financial statements.

* Group means Ngāti Kahungunu Iwi Incorporated and Kahungunu Asset Holding Company.

* Parent means Ngāti Kahungunu Iwi Incorporated.

Ngāti Kahungunu Iwi Incorporated Summary Financial Statements

FOR THE YEAR ENDED 30TH JUNE 2016

1. STATEMENT OF ACCOUNTING POLICIES

Reporting Entity

The reporting entity is Ngāti Kahungunu Iwi Incorporated (the Society). The Society is domiciled in New Zealand and is a charitable organisation registered under the Incorporated Societies Act 1908 and the Charities Act 2005.

The summary financial statements comprising the Society and its controlled entity, Kahungunu Asset Holding Company Limited, together the "Group", are presented for the year ended 30 June 2016.

These Summary Group Financial statements have been extracted from the audited consolidated Financial Statements dated 29 September 2016.

Basis of Preparation

Statement of Compliance

These Summary Group Financial statements have been extracted from the audited consolidated Financial Statements dated 29 September 2016.

The Group financial statements have been prepared in accordance with Generally Accepted Accounting Practice in New Zealand ("NZ GAAP").

Ngāti Kahungunu Iwi Incorporated is deemed to be a Public Benefit Entity – a PBEs primary objective is to provide goods and services for community or social benefit

Ngāti Kahungunu Iwi Incorporated as a public benefit not-for-profit entity is eligible to apply Not-for-profit Public Benefit Entity International Public Sector Accounting Standards (PBE IPSAS) on the basis that it does not have public accountability and it is not defined as large. The Board has elected to report in accordance with Tier 2 Not-for-profit PBE Accounting Standards and in doing so has taken advantage of all applicable Reduced Disclosure Regime ("RDR") disclosure concessions. This decision results in the Group not preparing a Statement of Service Performance for both reporting periods.

Kahungunu Asset Holding Company Ltd is deemed to be a For-profit entity as its primary objective is to receive and manage the Fisheries Settlement assets of Ngāti Kahungunu Iwi and other funds provided for maximum commercial benefit.

Kahungunu Asset Holding Company Ltd is eligible to apply Tier 2 For-profit accounting requirements as it does not have public accountability; and is not a large for-profit sector entity as it has total expenses less than \$30 million. The Board has elected to report in accordance with New Zealand Equivalents to International Financial Reporting Standards Reduced Disclosure Regime (NZ IFRS RDR) and in doing so has taken advantage of all applicable Reduced Disclosure Regime ("RDR") disclosure concessions.

The Group Financial Statements comply with Public Benefit Entity International Public Sector Accounting Standards ("PBE IPSAS") and other applicable financial reporting standards as appropriate that have been authorised for use by the External Reporting Board for Not-For-Profit and For-Profit entities. Kahungunu Asset Holdings Company Limited has been restated from NZIFRS RDR to PBE IPSAS RDR for

Ngāti Kahungunu Iwi Incorporated Summary Financial Statements

Group Reporting.

Changes in accounting policy

For the year ended 30 June 2015, the Group prepared its consolidated financial statements using New Zealand Financial Reporting Standards ("NZ FRS"). These have now been restated to Not-For-Profit PBE IPSAS - RDR and New Zealand International Financial Reporting Standards Reduced Disclosure Regime. An explanation of how the transition to Tier 2 Not-For-Profit PBE Accounting Standards has affected the reporting Statement of Financial Position and Statement of Comprehensive Revenue and Expenses is provided in Note 23 of the full financial statements

The significant accounting policies used in the preparation of these financial statements are set out in the full financial statements.

These summary Financial Statements cannot be expected to provide as complete an understanding as provided by the full financial statements. An unmodified opinion was issued on the full group financial statements.

Each tribal member is entitled to obtain a copy of the full financial statements upon request. Requests should be made to the Ngāti Kahungunu Iwi Incorporated Director of Smart Services, Ruth Wong - Ngāti Kahungunu Iwi Incorporated, Taikura House, Level 1, 304 Fitzroy Avenue, Hastings. 06 8762718 or toll free 0800 524 864. Email ruth@kahungunu.iwi.nz. The Ngāti Kahungunu Iwi Incorporated Board authorised the issue of the full financial statements on 29th September 2016.

NOTES TO THE SUMMARY CONSOLIDATED FINANCIAL STATEMENTS

1. RONGOMAIWAHINE IWI TRUST

The Deed of Settlement between Rongomaiwahine Iwi Trust and Ngāti Kahungunu Iwi Incorporated dated 21 July 2006 was cancelled based on repudiation by Rongomaiwahine Iwi Trust. Ngāti Kahungunu Iwi Incorporated is no longer obliged to transfer the cash and quota as outlined in the Deed of Settlement to Rongomaiwahine Iwi Trust and therefore the provision that was previously recorded was reversed in the 30 June 2015 year.

2. ADVOCACY RESERVE

During the 2015 year the additional dividend of \$400,000 provided by Kahungunu Asset Holdings Company Limited had not been utilised and was therefore put aside as an advocacy reserve. \$200,000 of this reserve was utilised during the 2016 year leaving \$200,000 in the Advocacy Reserve Fund.



Chairman - Ngahiwi Tomoana
29 September 2016



Board Representative - Mike Paku



Ngāti Kahungunu Iwi
INCORPORATED

Annual Plan 2016-2017

Board Priorities

Ngāti Kahungunu Iwi Incorporated recognises the need to review its objectives and align its strategies with the needs of whānau & hapū. The following points outline the high level goals for the Board for 2016-2017.

United Voice

Ngāti Kahungunu Iwi Incorporated will develop quality relationships with our whānau, hapū and marae, and organisations that will assist us to achieve our objectives.

Advocacy

Ngāti Kahungunu Iwi Incorporated will seek to influence decision making and policies developed by local, regional and central government.

Kahungunu Te Reo and Tikanga

Ngāti Kahungunu Iwi Incorporated aspires to have te reo Māori and the unique Ngāti Kahungunu dialectal variations along with tikanga practised in all places where Ngāti Kahungunu whānau gather.

Annual Plan

The Ngāti Kahungunu Iwi Incorporated annual plan outlined below describes the key objectives for the iwi between July 2016 and June 2017. These objectives are based on the following Ngāti Kahungunu Iwi Inc. strategies: He Mahere Rautaki Hai Haumanu I Te Reo O Ngāti Kahungunu / Kahungunu, kia eke - The Revitalization of Te Reo o Ngāti Kahungunu, Kahungunu Ki Uta, Kahungunu Ki Tai - Marine and Freshwater Fisheries Strategic Plan and Te Ara Toiora O Ngāti Kahungunu, the Kahungunu Wellbeing Strategy.

HE MAHERE RAUTAKI HAI HAUMANU I TE REO O NGĀTI KAHUNGUNU

STRATEGIC PLAN FOR THE REVITALIZATION OF TE REO O NGĀTI KAHUNGUNU

- Whakamana i te Pae o Huaki Pōuri – Support the revitalization of Ngāti Kahungunu Paepae
- Support projects that improve the quality of reo, and promote the use of unique dialectal variations unique to Ngāti Kahungunu.
- Research Projects to attain the dialectal variations.
- Support Matatini
- Provide cultural support to the tari

NGĀTI KAHUNGUNU NATURAL RESOURCES & ENVIRONMENT KAHUNGUNU KI UTA, KAHUNGUNU KI TAI – MARINE AND FRESHWATER STRATEGIC PLAN

- Advocate for Ngāti Kahungunu objectives and values to be incorporated into natural resources decision making and policy developed by local, regional and central government
- Complete a review of the Kahungunu Ki Uta Kahungunu Ki Tai strategic plan
- Support hapū to develop and progress hapū management plans to enhance their role as Kaitiaki of the natural resources.
- Develop quality relationships with organisations to assist us to achieve our natural resources objectives and to help build the capacity and capabilities of our people.

TE ARA TOIORA O NGĀTI KAHUNGUU KAHUNGUU WELLBEING STRATEGY

Strong, Vibrant, Healthy Whānau & Hapū – TE HAU O TE MAURI, TE HAU O TE ŌRĀ

- To progress the aims of Te Ara Toiora o Ngāti Kahungunu (Health & Wellbeing Strategy for Ngāti Kahungunu) by facilitating, brokering and enabling:
 - Wellbeing initiatives and strategies to progress and enhance Whānau & Hapū wellbeing.
 - Opportunities for Whānau and Hapū to gather & share wellbeing mātauranga
 - Kahungunu Whānau Whānui Research and evaluation of Whānau Wellbeing
- Advance the health and wellbeing of the Ngāti Kahungunu Iwi rohe by providing strategic vision and advice.

NGĀ POU TAUNAKI - SMART SERVICES

- Increase the vibrancy and wellbeing of Kahungunu whānau through events
- Improve the registration database and increase communication opportunities
- Provide benefits to members including scholarships, sponsorships, pātaka, online event management support, communications and database templates. Provide an iwi benefits to members card
- Communicate with whānau to inform and keep abreast of iwi activities and opportunities
- Strengthen the organisations financial system and processes
- Strengthen the internal administrative systems and processes
- Matatini and Kahungunu Festival

NGĀ TŪHONOHONOTANGA - POLITICAL

- Strengthen our relationship with the hapū claimant groups within the Ngāti Kahungunu rohe
- Improve Kahungunu representation on local and regional councils
- Influence policy developed by government agencies, local and regional councils,
- Monitor the performance of these entities based on Kahungunu criteria.

TE WHAKATIPU ŌHANGA - ECONOMIC DEVELOPMENT

- Develop and progress the economic status of Kahungunu whānau, hapū, iwi
- Progress and implement Mātariki – The Hawke's Bay Regional Economic Development Strategy with Te Kāhui Ōhanga o Takitimu

AGM Agenda

Ngāti Kahungunu Iwi Incorporated Annual General Meeting

Splash Planet Complex in conjunction with the AGM Pā Sports Day

26th November 2016

11:00am

Standard Business

- Mihi whakataū
- Himene/Karakia
- Apologies
- Maumahara
- Minutes of AGM 2015
- Receive Annual Report 2015-2016
 - Chairman's Report
 - Audited Financial Statements 2015-2016
 - Kahungunu Asset Holding Company Report
- Re-appoint Auditor

11:30am **Presentations**

- Te Matatini 2017

11.45am **Himene/Karakia**

Kahungunu

FESTIVAL

6-26 February 2017

WAITANGI DAY

When: Mon 6 Feb, 9am - 4pm
Where: HB Sports Park
Entry: Free

TE MATATINI PŌWHIRI

When: Wed 22 Feb, 11am
Where: McLean Park, Napier
Entry: Free

TE MANU TIORIORI EXHIBIT

When: Starts Sat 4 Feb
10am to 5pm
Where: MTG HB, Napier
Entry: Koha

WHĀNAU SHOW CONCERT

When: Wed 22 Feb, 7pm
Where: Clubs Hastings,
308 Victoria Street, Hastings
Tickets: visit website

KAHUNGUNU TAIKURA KURUPOUNAMU EXHIBIT

When: Starts Mon 6 Feb
9am to 5pm
Where: TTOH & Creative
Communities Arts Centre,
Hastings
Entry: Koha

MOMENTS TO REMEMBER KAUMATUA BALL

When: Thur 23 Feb, 7pm
Where: Clubs Hastings,
308 Victoria Street, Hastings
Tickets: visit website

TE HERENGA WAKA FESTIVAL

When: Mon 13 to Sun 26 Feb
Where: Ahuriri, Napier
Entry: Free

TE MATATINI FESTIVAL

When: Thur 23 - Sun 26 Feb
8am to 7.30pm
Where: HB Sports Park, Hastings
Tickets: i-ticket.co.nz

AHURIRI LIGHT TRAIL

When: Thur 16 to Sun 19 Feb
8.30pm to 10.30pm
Where: Meeanee Reserve,
Meeanee Quay, Ahuriri, Napier
Entry: Free

KAHUNGUNU PAVILION

When: Thur 23 - Sun 26 Feb
10am to 4pm.
Where: Te Matatini Festival
Tickets: Te Matatini event ticket
required for entry.

TAKITIMU KI RAROTONGA POU UNVEILING

When: Sat 18 Feb 4.30am
Where: Nga Pou o Heretaunga,
Civic Square, Hastings

KAHUNGUNU BEACH PARTY & BARRY WHITE & MOTOWN TRIBUTE ROADSHOW

When: Sat 25 Feb, 6pm
Where: Marineland, Napier
Entry: Free

KAHUNGUNU WATER BORNE SHOW

When: Sun 19 Feb, 6pm to 9pm
Where: Ahuriri, Napier
Entry: Free

KAHUNGUNU VYBZ

When: Sun 26 Feb 2017 7pm
Where: Clubs Hastings, 308
Victoria Street, Hastings
Tickets: R18 \$20 visit website

TANIWHA DRAGON SUMMIT

When: Mon 20 - Tue 21 Feb
Where: Clubs Hastings,
308 Victoria St, Hastings
Registrations: Visit Website

IWITOI KAHUNGUNU EXHIBIT

When: Mon 20 Feb, 10am-5pm
Where: Hastings City Art Gallery
Entry: Free

KAHUNGUNU TE MATATINI TICKETS

Ngāti Kahungunu Iwi will be selling tickets to Te Matatini at 50% to 70% discount to registered members of Kahungunu descent for a limited time.

- **ADULT GENERAL ADMISSION**
\$10 (Normally \$30)
- **Child (Under 16) General Admission**
\$5 (Normally \$15).
- **Under 5 free**
 - *The above are limited to two general admission one-day tickets per person.*
- **Fan Zone**
4 day reserved seat in the grandstand:
 - *A Zone \$75 (Normally \$150)*
 - *B Zone \$65 (Normally \$130)*
 - *C Zone \$55 (Normally \$110)*
 - *Fan Zone tickets are limited to one per person.*

Conditions:

- You must be of Kahungunu descent
- You must be registered with Ngāti Kahungunu Iwi Incorporated
- You must provide your Iwi membership number at purchase
- Tickets will be available for purchase during our December Taiwhenua / Rohe Roadshow

December Roadshow

Thursday 1st Wairoa

Wairoa Taiwhenua, 46 Marine Parade, Wairoa

Friday 2nd Napier

Te Whanganui A Orotu, 88 Macdonald Street, Napier

Wednesday 7th Tamatea

Tamatea Taiwhenua, Kitchener Street, Waipukurau

Thursday 8th Masterton

Kahungunu ki Wairarapa, 187-189 Queen Street, Rear Entrance, Masterton

Friday 9th Dannevirke

Kahungunu ki Tamaki nui-a Rua Taiwhenua, 171 High Street, Dannevirke



Ngāti Kahungunu Iwi
I N C O R P O R A T E D

TAIKURA HOUSE 304 FITZROY AVENUE, PO BOX 2406, HASTINGS 4153, NEW ZEALAND
PHONE 06 876 2718 • FAX 06 876 4807 • TOLL FREE 0800 KA HUNGUNU (0800 524 864)
EMAIL: rufh@kahungunu.iwi.nz
WEB: www.kahungunu.iwi.nz



AGM 26 NOVEMBER
11AM SPLASH PLANET, HASTINGS